



BOARD OF COUNTY COMMISSIONERS

T. PAGE THARP GOVERNMENTAL BUILDING
102 STARKSVILLE AVENUE NORTH, LEESBURG, GEORGIA 31763

TUESDAY, AUGUST 23, 2022 AT 6:00 P.M.
T. PAGE THARP BUILDING
OPAL CANNON AUDITORIUM
WWW.LEE.GA.US

MEETING AGENDA
VOTING SESSION

COUNTY COMMISSIONERS

Billy Mathis, Chairman	District 3
John Wheaton, Vice-Chairman	District 1
Luke Singletary, Commissioner	District 2
George Walls, Commissioner	District 5
	District 4

COUNTY STAFF

Christi Dockery, County Manager
Kaitlyn Sawyer, County Clerk
Jimmy Skipper, County Attorney

	<u>PAGE</u>
1. <u>INVOCATION</u> Dr. Josh Posey, First Baptist Church of Leesburg, to lead the invocation.	
2. <u>PLEDGE OF ALLEGIANCE</u>	
3. <u>CALL TO ORDER</u>	
4. <u>APPROVAL OF MINUTES</u> (A) Consideration to approve the minutes for the Board of Commissioners meeting for August 9, 2022.	A - C
5. <u>CONSENT AGENDA</u> NONE	
6. <u>NEW BUSINESS</u> (A) Recognition of employees' years of service.	1
7. <u>PUBLIC HEARING</u> NONE	
8. <u>DEPARTMENTAL MATTERS</u> <u>Parks & Recreation</u> (A) Consideration to authorize staff to put out a bid for a storage building.	2
9. <u>CONSTITUTIONAL OFFICERS & GOVERNMENTAL BOARDS/AUTHORITIES</u> <u>Utilities Authority</u> (A) Consideration to approve an application for a grant for drinking water from Georgia Governor's Office of Planning and Budget.	3 - 6
10. <u>COUNTY MANAGER'S MATTERS</u> (A) Updates on County projects. (B) Consideration to award the bid for the Landfill Retaining Wall Phase II project.	7 - 11 12 - 15

- (C) Consideration to approve the Safety Discount Verification Forms for ACCG. 16 - 17
 - (D) Consideration to approve an agreement with Pictometry for ortho and oblique imagery. 18 - 38
 - (E) Consideration to approve an application for a grant from the Georgia Emergency Management and Homeland Security Agency (GEMA/HS) to help with mitigation projects. 39 - 40
 - (F) Consideration to award the bid for Curbside Solid Waste Services. 41 - 45
11. **COMMISSIONER'S MATTERS**
 (A) Discussion of FY2023 LMIG application and potential projects. 46 - 51

12. **UNFINISHED BUSINESS**
 NONE

13. **COUNTY ATTORNEY'S MATTERS**
 NONE

14. **EXECUTIVE SESSION**
 NONE

15. **PUBLIC FORUM**
Citizens will be allowed to address the Board of Commissioners regarding any issues or complaints. Individuals should sign up prior to the start of the meeting.

16. **ANNOUNCEMENTS**
 (A) Offices of the Lee County Board of Commissioners will be **closed Monday, September 5, 2022** observance of Labor Day.
 (B) The next regularly scheduled County Commission Meeting is **Tuesday, September 13, 2022 at 6:00pm.**

17. **ADJOURNMENT**

AGENDA MAY CHANGE WITHOUT NOTICE

Lee County is a thriving vibrant community celebrated for its value of tradition encompassing a safe family oriented community, schools of excellence, and life long opportunities for prosperity and happiness without sacrificing the rural agricultural tapestry.

Persons with special needs relating to handicapped accessibility or foreign language interpretation should contact the ADA Coordinator at (229) 759-6000 or through the Georgia Relay Service (800) 255-0056 (TDD) or (800) 355-0135 (voice). This person can be contacted at the T. Page Tharp Building in Leesburg, Georgia between the hours of 9:00 a.m. and 4:00 p.m., Monday through Friday, except holidays, and will assist citizens with special needs given proper notice of seven (7) working days. The meeting rooms and buildings are handicap accessible.



BOARD OF COUNTY COMMISSIONERS

T. PAGE THARP GOVERNMENTAL BUILDING
102 STARKSVILLE AVENUE NORTH, LEESBURG, GEORGIA 31763

TUESDAY, AUGUST 9, 2022 6:00 P.M.
T. PAGE THARP BUILDING
OPAL CANNON AUDITORIUM
WWW.LEE.GA.US

MEETING MINUTES
WORK SESSION

COUNTY COMMISSIONERS

Billy Mathis, Chairman	District 3
John Wheaton, Vice-Chairman	District 1
Luke Singletary, Commissioner	District 2
George Walls, Commissioner	District 5
	District 4

COUNTY STAFF

Christi Dockery, County Manager
Kaitlyn Sawyer, County Clerk
Jimmy Skipper, County Attorney

The Lee County Board of Commissioners met in a work session on Tuesday, August 9, 2022. The meeting was held in the Opal Cannon Auditorium of the Lee County T. Page Tharp Governmental Building in Leesburg, Georgia. Those present were Vice-Chairman John Wheaton, Commissioner Luke Singletary, and Commissioner George Walls. Staff in attendance was County Attorney Jimmy Skipper, County Manager Christi Dockery, and County Clerk Kaitlyn Sawyer. Chairman Billy Mathis was absent. The meeting was also streamed on Facebook Live. Vice-Chairman Wheaton called the meeting to order at 6:00pm.

INVOCATION

Pastor Robin Chaplin, Victory Baptist Church, led the invocation.

PLEDGE OF ALLEGIANCE

The Board and the audience said the Pledge of Allegiance in unison.

CALL TO ORDER

APPROVAL OF MINUTES

- (A) Consideration to approve the Board of Commissioners meeting minutes for July 26, 2022.
Commissioner Walls made the **MOTION** to approve the Board of Commissioners meeting minutes for July 26, 2022. Commissioner Singletary seconded the **MOTION**. The **MOTION** was unanimous with Commissioner Wheaton voting yea.

CONSENT AGENDA

NONE

NEW BUSINESS

NONE

PUBLIC HEARING

NONE

DEPARTMENTAL MATTERS

Building Inspection/Business Licensing

- (A) Consideration to approve an alcohol license application for Richard Maddox, Fuzzy's Oakland LLC (Fuzzy's Taco Shop), for the on-premises sale of distilled spirits, wine, and malt beverages by the

drink.

Commissioner Singletary made the **MOTION** to approve an alcohol license for Richard Maddox, Fuzzy's Oakland LLC (Fuzzy's Taco Shop), for the on-premises sale of distilled spirits, wine, and malt beverages by the drink. Commissioner Walls seconded the **MOTION**. The **MOTION** was unanimous with Commissioner Wheaton voting yea.

Planning, Zoning, & Engineering

- (B) **Consideration to adopt a resolution granting final approval for Quail Valley Phase IV Subdivision (SD22-023) and accepting deeds of rights-of-way, easements, roads, and water system infrastructure.**

Commissioner Singletary asked if the issues regard the rights of way and utilities had been resolved. County Manager Christi Dockery stated that they had and added that this project documentation, as well as that for the following item, have been approved by County Attorney Skipper. Staff is only awaiting the maintenance agreements.

Commissioner Singletary made the **MOTION** to adopt a resolution granting final approval for Quail Valley Phase IV Subdivision (SD22-023) and accepting deeds of rights-of-way, easements, roads, and water system infrastructure. Commissioner Walls seconded the **MOTION**. The **MOTION** was unanimous with Commissioner Wheaton voting yea.

- (C) **Consideration to adopt a resolution granting final approval for The Groves Subdivision (SD22-024) and accepting deeds of rights-of-way, easements, roads, and water system infrastructure.**

Commissioner Singletary made the **MOTION** to adopt a resolution granting final approval for The Groves Subdivision (SD22-024) and accepting deeds of rights-of-way, easements, roads, and water system infrastructure. Commissioner Walls seconded the **MOTION**. The **MOTION** was unanimous with Commissioner Wheaton voting yea.

CONSTITUTIONAL OFFICERS & GOVERNMENTAL BOARDS/AUTHORITIES

- (A) **Consideration to appoint one (1) member to the Tax Assessors Board for a term of three (3) years. Current term expires 08/31/2022. New term expires 08/31/2025. Letters of interest in reappointment received from Tim Sumners.**

Commissioner Walls made the **MOTION** to reappoint Tim Sumners to the Tax Assessors Board for a term of three (3) years, expiring 08/31/2025. Commissioner Singletary seconded the **MOTION**. The **MOTION** was unanimous with Commissioner Walls voting yea.

Utilities Authority

- (B) **Consideration to approve a quote from Aldridge-Jordan, Inc. for the water main offset project for the Oakland Crossing Drive Extension.**

Commissioner Walls made the **MOTION** to approve a quote from Aldridge-Jordan, Inc. for \$9,837.06 for the water main offset project for the Oakland Crossing Drive Extension to come from SPLOST VII funds. Commissioner Singletary seconded the **MOTION**. The **MOTION** was unanimous with Commissioner Wheaton voting yea.

COUNTY MANAGER'S MATTERS

- (A) **Updates on County projects.**

County Manager Christi Dockery discussed the following ongoing projects in the County: (1) Georgia Power will be replacing the lights of the Oakland Library parking lot with LED at no charge, which should save approximately \$200 per month; and (2) Popco has begun work on the Hwy 82 water extension project, and will hopefully be completed in the next 6 to 8 weeks.

- (B) **Consideration to award the bid for the Resurfacing of Haley Drive.**

Commissioner Singletary made the **MOTION** to award the bid for the Resurfacing of Haley Drive to Oxford Construction Company, the lowest responsive bidder, for \$289,893.15 to come from TSPLOST funds. Commissioner Walls seconded the **MOTION**. The **MOTION** was unanimous with Commissioner Wheaton

voting yea.

COMMISSIONER'S MATTERS

NONE

UNFINISHED BUSINESS

NONE

COUNTY ATTORNEY'S MATTERS

- (A) **Consideration to ratify an amendment to the Joint Resolution authorizing the Execution of the T-SPLOST Intergovernmental Agreement (IGA) between the City of Leesburg, City of Smithville, and the Lee County Board of Commissioners.**

County Attorney Jimmy Skipper summarized the amendment by stating that the cities had a few sections they would like to be deleted from the IGA. All documents were signed by each entity and the paragraphs to be deleted were initialed as well.

Commissioner Singletary made the **MOTION** to ratify an amendment to the Joint Resolution authorizing the Execution of the T-SPLOST Intergovernmental Agreement (IGA) between the City of Leesburg, City of Smithville, and the Lee County Board of Commissioners. Commissioner Walls seconded the **MOTION**. The **MOTION** was unanimous with Commissioner Wheaton voting yea.

EXECUTIVE SESSION

NONE

PUBLIC FORUM

Citizens will be allowed to address the Board of Commissioners regarding any issues or complaints. Individuals should sign up prior to the start of the meeting.

Sam Johnson – State of Old Leslie Road; criticism of Public Works

ANNOUNCEMENTS

- (A) The ground-breaking ceremony for GDOT's Westover Blvd Extension Project will be held Tuesday, August 23, 2022.
- (B) The next regularly scheduled County Commission Meeting is **Tuesday, August 23, 2022 at 6:00pm.**

ADJOURNMENT

The meeting adjourned at 6:21PM.

Facebook video link: <https://www.facebook.com/leecountyga/videos/603001634717064>

CHAIRMAN

ATTEST: _____
COUNTY CLERK

Lee County is a thriving vibrant community celebrated for its value of tradition encompassing a safe family oriented community, schools of excellence, and life long opportunities for prosperity and happiness without sacrificing the rural agricultural tapestry.

Persons with special needs relating to handicapped accessibility or foreign language interpretation should contact the ADA Coordinator at (229) 759-6000 or through the Georgia Relay Service (800) 255-0056 (TDD) or (800) 355-0135 (voice). This person can be contacted at the T. Page Tharp Building in Leesburg, Georgia between the hours of 9:00 a.m. and 4:00 p.m., Monday through Friday, except holidays, and will assist citizens with special needs given proper notice of seven (7) working days.

The meeting rooms and buildings are handicap accessible.



**MEMORANDUM
LEE COUNTY BOARD
OF COMMISSIONERS**

TO: Honorable Board of County Commissioners
SUBJECT: Employee Years of Service Recognition
MEETING DATE: Tuesday, August 23, 2022

Please recognize the following employees for their many years of service to Lee County:

- 5 years – David Tollefson – Firefighter/EMT-B
- 15 years – Geoffrey Williamson – Firefighter/Paramedic
- 15 years – Jeremy Morey – Director, Parks and Recreation
- 20 years – Coleman Williams – Assistant Fire Chief/EMA Director



MEMORANDUM LEE COUNTY BOARD OF COMMISSIONERS

TO: Honorable Board of County Commissioners

DEPT. HEAD: **Jeremy Morey**

SUBJECT: Equipment Storage Building- Park Street
(Replacement for storage building behind Courthouse)

MEETING DATE: August 23, 2022

MOTION/RECOMMENDATION

Request to put out an RFP for an equipment storage building to replace the storage building that is currently being used behind the courthouse by the Lee County Recreation Department. The City of Leesburg has a current plan that calls for the removal of the existing building,

This building could be paid for with impact fee and/or SPLOST funds and was approved during the 2022-23 budget process. The estimated cost for project is \$130,000.00 to \$155,000.00.

BACKGROUND

The Lee County Recreation Department has used the warehouse behind the courthouse for the majority of its major equipment storage. The City of Leesburg currently has a project that contains plans to remove that structure. The Recreation Department would like to build an equivalent size storage facility on the county owned property to the north of our current recreation office, at 141 Park Street. This would allow the equipment that is currently stored in the current building, as well as the remaining equipment that is used at Park Street to be stored in the new building.

ATTACHMENTS

NONE

Drinking Water Projects to Support Increased Population

Program Total: \$400,000,000 (this allocation is a planning amount and is subject to change)

The EPA regulation implementing the DWSRF program provides that projects needed primarily to serve future population growth are not eligible uses of the DWSRF. A project that is intended primarily to address public health or regulatory compliance issues for the existing service population may be sized for a "reasonable" amount of population growth over the useful life of the project.

ARPA does not include the same limitation as the SDWA. Accordingly, the final rule provides that recipients may use SLFRF funds for projects that are needed to support increased population in certain cases. ARPA limits projects to those investments that are "necessary." As discussed above, Treasury interprets this to mean that the investments must be:

- (1) responsive to an identified need to achieve or maintain an adequate minimum level of service, which for some eligible project categories may include a reasonable projection of increased need, whether due to population growth or otherwise and
- (2) a cost-effective means for meeting that need, taking into account available alternatives.

For this eligible use category, expansion of drinking water service infrastructure, the project must also be projected to be sustainable over its estimated useful life.

Webinar Friday, August 19, 2022 11AM-12PM

Drinking Water Projects to Support Increased Population Webinar for Eligible Applicants

Meeting Link: A link to the meeting will be sent after registration is confirmed.

Date: Friday August 19, 2022

Time: 11am-12pm

Ready to Apply?

Application Period: August 15, 2022-September 9, 2022 (11:59pm)

Click on the button below for the application link.

Click on **Register** to get started.

Once registration is complete, a confirmation link will be sent to your email address. You won't be able to submit applications or complete certain tasks until your email address have been verified.

Eligibility

Projects of the type that meet the eligibility requirements of [40 CFR 35.3520 \(https://www.ecfr.gov/current/title-40/chapter-I/subchapter-B/part-35/subpart-L/section-35.3520\)](https://www.ecfr.gov/current/title-40/chapter-I/subchapter-B/part-35/subpart-L/section-35.3520) other than the requirement of subparagraph (b)(1) of such regulation to address present or prevent future violations of health-based drinking water standards, if the following conditions are met:

- (A) The project is needed to support increased population, with need assessed as of the time the project is undertaken;
- (B) The project is designed to support no more than a reasonable level of projected increased need, whether due to population growth or otherwise;

- (C) The project is a cost-effective means for achieving the desired level of service; and
- (D) The project is projected to continue to provide an adequate level of drinking water over its estimated useful life

(vi) Dams and reservoirs. Rehabilitation of dams and reservoirs if the following conditions are met:

1. The project meets the requirements of 40 CFR 35.3520 other than the following requirements:
 - (1) The prohibition on the rehabilitation of dams and reservoirs in 40 CFR 35.3520(e)(1) and (3); and
 - (2) The requirement in 40 CFR 35.3520(b)(1) that the project is needed to address present or prevent future violations of health-based drinking water standards, provided that if the dam or reservoir project does not meet this requirement, the project must be needed to support increased population, with need assessed as of the time the project is undertaken, and the project must be projected to continue to provide an adequate level of drinking water over its estimated useful life;
- (B) The primary purpose of the dam or reservoir is for drinking water supply;
- (C) The project is needed for the provision of drinking water supply, with need assessed as of the time the project is initiated;
- (D) The project is designed to support no more than a reasonable level of projected increased need, whether due to population growth or otherwise; and
- (E) The project is a cost-effective means for achieving the desired level of service.

Applicant Eligibility

All ARPA applicants must have an organization, or subrecipient, that will serve as the fiduciary agent and assume overall responsibility for the grant. Eligible ARPA applicants include:

A unit of local government

County

Program Category Considerations

1. Funds may be used for rehabilitation of dams and reservoirs if the primary purpose of the dam or reservoir is for drinking water supply and the rehabilitation project is necessary for continued provision of drinking water supply
2. The project must in any case be designed to support no more than a reasonable level of projected increased need.
3. The recipient must also determine that the project is cost-effective, i.e., that there are not significantly superior alternatives that are available, taking into consideration the relative costs and benefits of the project as compared to those alternatives.

Match Funds

There is no match requirement, but match funds will be part of the scoring criteria.

Additional Information

In addition to the application, applicants will be required to upload:

 **A Cost Effectiveness Analysis (<https://opb.georgia.gov/document/document/cost-effectiveness-analysis-template/download>)**

Vendor Management Form and W-9

Financials

Tool for Assessing Risk

SAM.gov Registration

Project Timeline

Detailed Budget Worksheet

Letters of Support (Optional)- Letters of support will only be reviewed if uploaded at the time of application

Reimbursement Method

These funds will be made available for reimbursement for eligible activity through a modified reimbursement method. Please review our post award FAQs for more information on reimbursements.

[PDF](#) /document/document/csfrf-post-award-faqs/download (<https://opb.georgia.gov/document/document/csfrf-post-award-faqs/download>)

Policy Requirements

Policy Requirements: All applicants are subject to reporting and auditing requirements per federal guidelines and OPB terms and conditions.

Recipients of SFRF must align to policy requirements under 2 CFR 200.

The following 2CFR policy requirements apply to 21.027 assistance listing for Coronavirus State and Local Fiscal Recovery Funds (CSLFRF), Coronavirus State Fiscal Recovery Fund (CSFRF) and Coronavirus Local Fiscal Recovery Fund (CLFRF):

Subpart B, General provisions

Subpart C, Pre-Federal Award Requirements and Contents of Federal Awards

Subpart D, Post Federal; Award Requirements

Subpart E, Cost Principles

Subpart F, Audit Requirements

*Additional requirements may be placed on awards are outlined in an executed terms and conditions agreement to accept the award.

Post Award Information:

[PDF](#) <https://opb.georgia.gov/document/document/csfrf-post-award-faqs/download> (<https://opb.georgia.gov/document/document/csfrf-post-award-faqs/dow>)

Strong Labor Standards in Water, Sewer, and Broadband Construction

As stated in the Supplementary Information to the interim final rule, Treasury encourages recipients to carry out investments in water, sewer, or broadband infrastructure in ways that produce high-quality infrastructure, avert disruptive and costly delays, and promote efficiency. Treasury encourages recipients to use strong labor standards, including project labor agreements (PLAs) and community benefits agreements that offer wages at or above the prevailing rate and include local hire provisions. Treasury also recommends that recipients prioritize in their procurement decisions employers who can demonstrate that their workforce meets high safety and training standards (e.g., professional certification, licensure, and/or robust in-house training), that hire local workers and/or workers from historically underserved communities, and who directly employ their workforce or have policies and practices in place to ensure contractors and subcontractors meet high labor standards. Treasury further encourages recipients to prioritize employers (including contractors and subcontractors) without recent violations of federal and state labor and employment laws.

Furthermore, among other requirements contained in 2 CFR 200, Appendix II, all contracts made by a recipient or subrecipient in excess of \$100,000 with respect to water, sewer, or broadband infrastructure project that involve employment of mechanics or laborers must include a provision for compliance with certain provisions of the Contract Work Hours and Safety Standards Act, 40 U.S.C. 3702 and 3704, as supplemented by Department of Labor regulations (29 CFR Part 5). Treasury will continue to seek information from recipients on their workforce plans and water, sewer, and broadband projects undertaken with SLFRF funds. This reporting will support transparency and competition by enhancing available information on the services being provided.

The Office of Planning and Budget will collect reporting information required by Treasury regarding Strong Labor Standards in Water, Sewer, and Broadband Construction based on the [Reporting and Compliance Guide](#). (https://www.google.com/search?q=treasury+reporting+and+compliance+guidance&rlz=1C1GCEA_enUS1018US1018&oq=treasury+reporting+a&aqs=chrome.169157j35139j0j512j0i22j30j3j69i60l2.3403j0j4&sourceid=chrome&ie=UTF-8) Recipients of State and Local Fiscal Recovery Funds under Water, Sewer, and Broadband Infrastructure should be prepared to respond accordingly.

ARPA Cash Flow
as of July 31, 2022

Bank Balance as of June 31, 2022	5,459,831.09
Total Cash	<u>5,459,831.09</u>
Current Encumbrances:	
Broadband (County contribution to broadband grant)	1,200,000.00
US Highway 82 water/sewer project	900,000.00
Motorola Equipment	2,238,115.54
Total of Encumbrances	<u>4,338,115.54</u>
Total Cash Available to spend on projects as of July 31, 2022	<u>1,121,715.55</u>



MEMORANDUM

LEE COUNTY BOARD OF COMMISSIONERS

TO: Honorable Board of County Commissioners
SUBJECT: County Updates

2021 CDBG

- Palmyra Mobile Home Park project
- Project application submitted June 4, 2021
- Pre-Application Public Hearing held September 22, 2020
- Recommended County match at \$100,000.00
- \$469,284.00 grant amount awarded to Lee County on September 27, 2021
- Kick-off Meeting – December 2021
- Chad Griffin, Still Water Engineering, to verify the property lines
- Final Design complete
- Deeds being drafted and easements to be requested from the property owner
- Staff is currently working to put out a RFP

Agricultural Complex

- Located on 100 acres on Leesburg Bypass — 231 State Route 3
- Proposed plans provided July 29, 2020
 - Including: A boating access point at the creek's edge, the agricultural complex, walking trails, and campsites
- Resolution adopted and lease agreement signed on September 22, 2020 with Georgia Department of Natural Resources for a Boat Ramp
 - Renewed January 11, 2022
 - Estimated Start Date: Fall 2022
 - DNR hired EMC Engineering to survey property for canoe/kayak ramp
- DNR Lease Parcel Survey Estimated Completion: March 2022
- Improvements to the Property
 - Renovation of Covered Building: New roof, fresh paint, picnic tables, electrical system, well
 - Bobby Donley, Lanier Engineering, provided proposed site plan
 - Proposal submitted to the BOC for review
 - Trails: ¾ mile walking trail that runs along a 46 foot high ridgeline above the Kinchafoonee Creek and has a seasonal view of the waterway
 - Eight (8) picnic tables as well as a number of trash cans have been placed along this trail on the creek side
 - Directional signs for the area ordered (i.e. Parking, No Parking, trail markers, boundary signs, etc.)
- Future Improvements
 - Defining the road
 - Rocking the area on top of the ridgeline for a parking area
 - Placing a gate at the trailhead so that the area can be closed to public for safety during high water events

- Planning/Designing Committee created by the Board at the May 11, 2021 meeting
 - **Committee Members:** Art Ford, Tim Sumners, Tom Sumners, Bobby Donley, Lisa Davis, David Dixon, Judy Powell, Commissioner Rick Muggridge, Commissioner Luke Singletary, County Manager Christi Dockery, Parks & Recreation Director Jeremy Morey, Chief Marshal Jim Wright
 - **First Meeting:** June 14, 2021
 - **Second Meeting:** November 15, 2021
 - **Third Meeting:** January 11, 2022

2020 Census Numbers

- Lee County: 33,179
- Smithville: 593
- Leesburg: 3,480

2021 Census Numbers

- Lee County: 33,411

Commercial Land Development Permits

- Ace Hardware Store
- Action Building
- Artesian City Federal Credit Union
- Brittany Lakes 2
- Buck Run 5
- Cypress Cove 3
- DeSoto Silicon Ranch Phase II
- Finish Line Storage 2
- Ledo Self Storage 2
- Live Oak 3
- Mini Warehouse Office, Hwy 82
- Oakland Crossings Drive Extension
- Oaklee Investment, LLC
- Plantation Storage 2
- Quail Chase 7
- Woodgrain Millwork

Gymnasium Windows

- Project overseen by Bill Walter, Masonry Restoration Technologies & Services, LLC
- On December 14, 2021, the Board voted unanimously to allow the Courthouse Annex Window Sealant Project and the Gymnasium Window Replacement Project to be added to the existing contract for the Tharp Building Restoration Project for an estimated cost of \$56,840.00
- Estimated Start Date: August 2022
 - Delay due to supply shortage

Extended Water Installation on Hwy 82

- RFQ for design
 - Approved by BOC at April 27, 2021 meeting
 - BOC awarded bid on September 14, 2021 to **Lanier Engineering, Inc.**
- EPD Southwest District Office is currently reviewing the project.
- RFP for Construction
 - BOC awarded bid on January 11, 2022 to **Popco, Inc.** to not exceed \$829,621.26
- Project estimated to be complete within the next 6 weeks

GIS

Road Layer

- Including road width, length, and speed limits

Utilities Mapping Project

- Purpose: To map all utilities in Lee County
 - Includes water mains, water valves, water towers, fire hydrants, sewer lines, sewer manholes, sewer pump stations, fiber, gas, telephone, etc. as well as feature type, pipe size, pipe material, valve size, etc.
- Goal: To have an internet map in ArcGIS Online where utility workers can view utility maps on a tablet in the field.

Hospital

- Public Works staff completed a construction entrance road
- Preliminary designs were presented by Matthew Inman of EMC Engineering in January 2019
- Estimated Cost for Road: \$1,498,552.50 (SPLOST VII)
- Construction expected to take approximately 6 to 9 months
- All fees for LCMC land disturbance waived
- USACE permit for holding pond designs expires August 2022
- CON granted
- Phoebe has filed another objection, resulting in another 30 day delay
- Roadway Regrading Project
 - Matthew Inman, EMC Engineering, Project Engineer
 - SPLOST VII Funds
 - BOC awarded the bid on December 14, 2021 to **Oxford Construction** for \$453,585.00
 - Start Date: February 2022
 - Completion Date: June 2022
- August 2022: Georgia Department of Community Health approved modifications to the CON
 - Phase I Proposed Completion Date: December 15, 2022
 - Phase II Proposed Completion Date: March 15, 2024

LMIG Funds

- **FY2023**
 - Application Due: February 1, 2023
 - Project discussions ongoing
 - Funds to be Received from GDOT: \$627,424.76
 - Total, with 30% match from Lee County: **\$815,652.19**
- **FY2022**
 - Application Approved: January 25, 2022
 - For use in resurfacing the following roads: Palmyra Road, Story Lane, Pineridge Drive, Southhill Drive, East Century Road, Cookville Road, Stocks Dairy Road, Woodstone Circle, Waterbury Court, Wayside Court, Winners Court, Groover Street, and Gus Martin Road
 - **Roads Completed Include: Cookville Road, Palmyra Road, Pineridge Drive, Southhill Drive, and East Century Road**
 - Funds to be Received from GDOT: \$612,489.86
 - Total, with 30% match from Lee County: **\$796,236.82**
 - Start Date: May 2022
 - Completion Date: August 2022

Sidewalks

- Georgia Department of Transportation, GDOT, has approved the City of Leesburg's request for funding assistance for sidewalks on State Route 3, State Route 32, and Firetower Road
- GDOT is committing up to \$304,000.00, or 70% of the project cost, whichever is less
- Failure to begin projects before March 30, 2022 may result in the cancellation of funds
- Awaiting notice regarding the status of this grant

Speed Limit Ordinance

- Approved by BOC at April 26, 2022 meeting
- Staff has submitted documents to GDOT
- Requested DOT examine Old Leesburg Road/State Route 133

- Awaiting GDOT review and approval

SPLOST VII

- Collection Began: October 1, 2019
- Collection Expires: September 30, 2025

SPLOST VIII

- Possible Ballot Year: 2024

Storm Drainage Repair/ Holding Ponds

- Lumpkin Road
 - BOC approved a contract with Lanier Engineering to survey in March 2020
 - Survey completed June 2020
 - BOC currently reviewing plans and options
- Liberty Holding Pond (Doublegate)
 - BOC approved a contract with engineer Mike Talley to design
 - BOC approved a contract with Lanier Engineering to survey in February 2019
 - Under review

TSPLOST

- Collection: April 1, 2019 - March 31, 2024
- Cities and County began receiving revenue in May 2019

TSPLOST II

- Ballot Year: November 2022
- Joint meeting held Tuesday, June 21, 2022 at 5:00pm

RFPs and RFQs

Open

Residential and Commercial Curbside Garbage Services

- Pre-Bid Meeting: August 9, 2022
- Bid Opening: August 23, 2022
- Results to be brought before the Board on August 23, 2022
- Previous Bid Opening: June 7, 2022
- Results brought before the Board on June 28, 2022
 - Bids rejected
- Services to begin September 2023

Landfill Retaining Wall Phase II

- Pre-Bid Meeting: July 28, 2022
- Bid Opening: August 11, 2022
- Results to be brought before the Board on August 23, 2022

Recently Awarded

Resurfacing of Haley Drive

- Pre-Bid Meeting: July 12, 2022
- Bid Opening: August 2, 2022
- BOC awarded bid on August 9, 2022 to **Oxford Construction** for \$289,893.15

Water System Improvement Project- Highway 82

- Bid Opening: January 6, 2022
- BOC awarded bid on January 11, 2022 to **Popco, Inc.** to not exceed \$829,621.26
- BOC awarded Engineering Services, following a RFQ, to **Lanier Engineering** on September 14, 2021

Future

LED Lighting in the Fire Stations

- Staff writing RFP documents
- Projected Bid Opening: September 2022

Courthouse Window Coverings

- Approved by BOC at May 25, 2021 meeting
- Staff writing RFP documents
- Projected Bid Opening: September 2022

LED Lighting in all County Buildings

- Approved by BOC at March 23, 2021 meeting
- Projected Bid Opening: TBD

ADA Compliant Website

- Staff writing RFP documents
- Projected Bid Opening: TBD

County Building Painting Services

- Approved by BOC at March 23, 2021 meeting
- Staff writing RFP documents
- Projected Bid Opening: TBD

Flooring Services for County Buildings

- Approved by BOC at April 27, 2021 meeting
- Staff writing RFP documents
- Projected Bid Opening: TBD

Extended Sewer Installation on Hwy 19

- Approved by BOC at June 22, 2021 meeting
- Staff writing RFQ documents
- Projected Bid Opening: TBD



MEMORANDUM LEE COUNTY BOARD OF COMMISSIONERS

TO: Honorable Board of County Commissioners

SUBJECT: Landfill Retaining Wall Phase II

MEETING DATE: Tuesday, August 23, 2022

MOTION/RECOMMENDATION

Motion to award the bid for the Landfill Retaining Wall Phase II project. Staff recommends awarding the bid to Griffin Grading and Concrete, the lowest responsive bidder, for a total cost of \$127,164.10.

BACKGROUND

Sealed written bids were accepted from qualified vendors for the Landfill Retaining Wall Phase II project. All bids were opened during a public bid opening at 2:05pm on Thursday, August 11, 2022 in the Opal Cannon Auditorium of the T. Page Tharp Governmental Building.

Sealed written bids were received from three (3) vendors:

Griffin Grading and Concrete	\$127,164.10
R&M Construction	\$132,700.00
W.J. Kirksey Construction	\$182,000.00

ATTACHMENTS

Proposal from Griffin Grading & Concrete, LLC
Proposal from R&M Construction of Albany, LLC
Proposal from W.J. Kirksey Construction

Invitation to Bid
Landfill Retaining Wall Project
RFP #0211

Bid Form

Name of Bidder/ Vendor: Griffin Grading & Concrete, LLC

Contact Person: Andrew Poe ,Jamie Weeks

Mailing Address: 1179 Hwy 280 West, Cordele, GA 31015

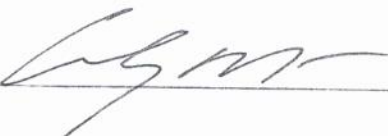
Telephone: 229-276-0888

Email: Andrew Poe: andypoe@griffingradingconcrete.com
Jamie weeks: jamieweeks@griffingradingconcrete.com
Alejandro Barrios: Barrios@griffingradingconcrete.com

It is agreed by the undersigned bidder that the signature and submission of this bid represents the bidder's acceptance of all terms, conditions, and requirements of the bid specifications and, if awarded, the bid will represent the agreement between the parties. No addendums will be allowed unless initiated by the County.

Construct retaining wall for landfill ramp (complete), located at 759 Highway 32 East Leesburg, GA 31763, in accordance with the attached plans.

Total Bid Amount = \$ 127,164.10

Authorized Signature:  Title: President

Name Printed: Andrew Poe Date: 08/11/2022

R&M Construction of Albany, LLC
1629 S. Philema Rd.
Albany, Ga 31701
229-869-7611

Estimate

Date	Bid #
8/10/2022	146501

Name / Address
Lee County Board Commisioners Joey Davenport

WO #

Description	Total
New Retaining wall For Lee County Land Fill Quote For Design drawings by R&L Engineering	132,700.00
Total	\$132,700.00

Invitation to Bid
Landfill Retaining Wall Project
RFP #0211


Bid Form

Name of Bidder/ Vendor: WJ Kirksey Construction
Contact Person: JOEY KIRKSEY
Mailing Address: PO Box 71506, Albany, GA 31708
Telephone: 229-888-6641
Email: JKirksey@WJkirksey.com

It is agreed by the undersigned bidder that the signature and submission of this bid represents the bidder's acceptance of all terms, conditions, and requirements of the bid specifications and, if awarded, the bid will represent the agreement between the parties. No addendums will be allowed unless initiated by the County.

Construct retaining wall for landfill ramp (complete), located at 759 Highway 32 East Leesburg, GA 31763, in accordance with the attached plans.

Total Bid Amount = \$ 182,000.⁰⁰

Authorized Signature:  Title: Owner
Name Printed: JOEY KIRKSEY Date: 8/11/22

INTERLOCAL RISK MANAGEMENT AGENCY

SAFETY DISCOUNT VERIFICATION FORM

If the organization is a member of the ACCG - IRMA [property & liability] Insurance Program, complete this SAFETY DISCOUNT VERIFICATION FORM and return between

August 1, 2022 and September 16, 2022

The appointed ACCG-IRMA Safety Coordinator is Brandy Hoey
(Safety Coordinator is responsible for the Safety Program)

Position HR Director Email: brandy.hoey@lee.ga.us

Yes No If there is a change in the safety coordinator, please advise if the previous contact is still affiliated with the county to maintain a current database.

TRAINING REQUIREMENTS

• SAFETY COORDINATORS

COMPLETE SAFETY COORDINATOR MODULES I, II, OR III I 3/30/2022, II 5/31/2022, III 5/10/2022
(COURSE / DATE)

• ANY MEMBER EMPLOYEE

ATTEND LGRMS TRAINING COURSE OR WEBINARS First Amendment Auditors 7/26/2022
(COURSE / DATE)

DEPARTMENTAL SAFETY MEETINGS OCT-DEC JAN-MAR APR-JUN JUL-SEP

SAFETY COMMITTEE MEETINGS OCT-DEC JAN-MAR APR-JUN JUL-SEP

SAFETY ACTION PLAN [DUE APRIL 29TH to LGRMS] 4/27/2022
(DATE SUBMITTED)

The members of the Board of Commissioners of Lee County County
(Name of County)
hereby verify that they fully comply with the requirements of the Safety Discount Program.

County Chairman Signature

Date

Email accginsurance@accg.org



COUNTY

[159 COUNTY GOVERNMENTS]

GROUP SELF-INSURANCE WORKERS' COMPENSATION FUND

SAFETY DISCOUNT VERIFICATION FORM

If the organization is a member of the ACCG-GSIWCF [workers' comp] Insurance Program, complete this SAFETY DISCOUNT VERIFICATION FORM and return between

August 1, 2022 and September 16, 2022

The appointed ACCG-GSIWCF Safety Coordinator is Brandy Hoey
(Safety Coordinator responsible for the Safety Program)

Position HR Director Email: brandy.hoey@lee.ga.us

Yes No If there is a change in the safety coordinator, please advise if the previous contact is still affiliated with the county to maintain a current database.

TRAINING REQUIREMENTS

• SAFETY COORDINATORS

COMPLETE SAFETY COORDINATOR MODULES I, II, OR III I 3/30/2022, II 5/13/2022, III 5/10/2022
(COURSE / DATE)

• ANY MEMBER EMPLOYEE

ATTEND LGRMS TRAINING COURSE OR WEBINARS "First Amendment Audite" 7/26/2022
(COURSE / DATE)

DEPARTMENTAL SAFETY MEETINGS OCT-DEC JAN-MAR APR-JUN JUL-SEP

SAFETY COMMITTEE MEETINGS OCT-DEC JAN-MAR APR-JUN JUL-SEP

SAFETY ACTION PLAN [DUE APRIL 29TH to LGRMS] 4/27/2022
(DATE SUBMITTED)

The members of the Board of Commissioners of Lee County County
(Name of County)

hereby verify that they fully comply with the requirements of the Safety Discount Program.

County Chairman Signature

Date

Email accginsurance@accg.org



MEMORANDUM LEE COUNTY BOARD OF COMMISSIONERS

TO: Honorable Board of County Commissioners
Christi Dockery, County Manager

FROM: Randy Weathersby, GIS Manager

SUBJECT: Pictometry- Ortho and Oblique Imagery

MEETING DATE: Tuesday, August 23, 2022

We are requesting approval to spend **\$86,250.00 (budgeted- SPLOST VII)** to pay for Phase I of an optional two phase project with Pictometry. This technology will provide Lee County with two types of aerial photos to be flown in January or February of 2023.

The first type of imagery we will receive are the traditional orthophotos like we currently have from 2014 and 2017. The second type are known as oblique photos. Oblique photos are similar to the Google photos we have all seen on the internet, except more advanced. You can circle around a structure or object, zoom in and out, and look at it from different angles.

In addition, we will receive a product called Change Finder. We will be able to generate building outlines from both the existing 2017 photos and the new 2023 photos and deliver them to us in GIS format. They will also compare 2017 building outlines to 2023 building outlines to identify changes, and deliver that to us as a separate GIS layer.

The oblique aeriels and Change product will be an invaluable tool for Tax Department in completing property appraisals. These products are completely compatible with GIS and with the Lee County qPublic map. The oblique imagery will be useful to every Department in Lee County, especially Public Safety. This product will be able to provide visual location indicators to dispatchers within the E-911 Center and help first responders be aware of different points of entry into a building.

This request is for Phase I of the project. Phase I is already funded in the budget. Phase II is optional, but, locks in the price of a second flight in three years at \$85,395.00. We would make the determination to proceed with phase two in three years.

**AGREEMENT BETWEEN
 PICTOMETRY INTERNATIONAL CORP. (“PICTOMETRY”) AND
 LEE COUNTY, GA (“CUSTOMER”)**

1. This order form (“Order Form”), in combination with the contract components listed below:

Section A: Product Descriptions, Prices and Payment Terms

Section B: License Terms:

- Delivered Content Terms and Conditions of Use
- Online Services General Terms and Conditions
- Software License Agreement

Section C: Non-Standard Terms and Conditions

Appendix 1: Photogrammetric Product Specifications

Map(s)

(all of which, collectively, constitute this “Agreement”) set forth the entire understanding between Pictometry and Customer with respect to the subject matter hereof and supersedes all prior representations, agreements and arrangements, whether oral or written, relating to the subject matter hereof. Any modifications to this Agreement must be made in writing and be signed by duly authorized officers of each party. Any purchase order or similar document issued by Customer in connection with this Agreement is issued solely for Customer’s internal administrative purposes and the terms and conditions set forth on any such purchase order shall be of no force or effect as between the parties.

2. In the event of any conflict among any contract components comprising this Agreement, order of precedence for resolving such conflict shall be, from highest (i.e., supersedes all others) to lowest (i.e., subordinate to all others): Section C: Non-Standard Terms and Conditions; Appendix 1: Photogrammetric Product Specifications; Section A: Product Descriptions, Prices and Payment Terms; License Terms in order as listed above under the heading 'Section B: License Terms'; and Order Form.

3. All notices under this Agreement shall be in writing and shall be sent to the following respective addresses:

CUSTOMER NOTICE ADDRESS
102 Starksville Ave
Leesburg, GA 31763
Attn: Randy Weathersby, GIS Manager
Phone: (229) 759-6000

PICTOMETRY NOTICE ADDRESS
25 Methodist Hill Drive
Rochester, New York 14623
Attn: General Counsel
Phone: (585) 486-0093 Fax: (585) 486-0098

Either party may change their respective notice address by giving written notice of such change to the other party at the other party’s then-current notice address. Notices shall be given by any of the following methods: personal delivery; reputable express courier providing written receipt; or postage-paid certified or registered United States mail, return receipt requested. Notice shall be deemed given when actually received or when delivery is refused.

4. This Agreement, including all licenses granted pursuant to it, shall be binding upon and inure to the benefit of the parties hereto, their successors and permitted assigns, but shall not be assignable by either party except that (i) Pictometry shall have the right to assign its right to receive Fees under this Agreement, provided no such assignment shall affect Pictometry’s obligations hereunder, and (ii) Pictometry shall have the right to assign all its rights under this Agreement to any person or entity, provided the assignee has assumed all of Pictometry’s obligations under this Agreement.

5. IN NO EVENT SHALL EITHER PARTY BE LIABLE, UNDER ANY CAUSE OF ACTION OF ANY KIND ARISING OUT OF OR RELATED TO THIS AGREEMENT (INCLUDING UNDER THEORIES INVOLVING TORT, CONTRACT, NEGLIGENCE, STRICT LIABILITY, OR BREACH OF WARRANTY), FOR ANY LOST PROFITS OR FOR ANY INDIRECT, INCIDENTAL, CONSEQUENTIAL, PUNITIVE, OR OTHER SPECIAL DAMAGES SUFFERED BY THE OTHER PARTY OR OTHERS, EVEN IF A PARTY HAS BEEN ADVISED OF THE POSSIBILITY OF SUCH DAMAGES.

6. With respect to any claims that Customer may have or assert against Pictometry on any matter relating to this Agreement, the total liability of Pictometry shall, in the aggregate, be limited to the aggregate amount received by Pictometry pursuant to this Agreement.

7. The waiver by either party of any default by the other shall not waive subsequent defaults of the same or different kind.

8. In the event that any of the provisions of this Agreement shall be held by a court or other tribunal of competent jurisdiction to be unenforceable, such provision will be enforced to the maximum extent permissible and the remaining portions of this Agreement shall remain in full force and effect.
9. Except with respect to Customer's payment obligations for services delivered, reports delivered or any ongoing subscription payment obligation, each party will be excused from performance under this Agreement, will not be deemed to be in breach hereof, and will have no liability to the other party whatsoever if either party is prevented from performing any of its obligations hereunder, in whole or in part, as a result of a Force Majeure Event. A "Force Majeure Event" means an event or occurrence beyond the control of the nonperforming party, such as an act of God or of the public enemy, embargo or other act of government in either its sovereign or contractual capacity, government regulation, travel ban or request, court order, civil disturbance, terrorism, war, quarantine restriction, epidemic, virus, fire, weather, flood, accident, strike, slowdown, delay in transportation, electrical power outage, interruption or degradation in electronic communications systems, inability to obtain necessary labor, materials or manufacturing facilities, and other similar events. In the event of any delay resulting from a Force Majeure Event, any date of delivery hereunder will be extended for a period equal to the time lost because of the delay.
10. In consideration of, and subject to, payment by Customer of the Fees specified in Section A of this Agreement, Pictometry agrees to provide Customer with access to and use of the products specified in Section A of this Agreement, subject to the terms and conditions set forth in this Agreement. Customer hereby agrees to pay the Fees specified in Section A of this Agreement in accordance with the stated payment terms and accepts and agrees to abide by the terms of this Agreement.

This Agreement shall become effective upon execution by duly authorized officers of Customer and Pictometry and receipt by Pictometry of such fully executed document, such date of receipt by Pictometry being the "Effective Date."

PARTIES:

CUSTOMER	PICTOMETRY
LEE COUNTY, GA	PICTOMETRY INTERNATIONAL CORP.
	a Delaware corporation
SIGNATURE:	SIGNATURE:
NAME:	NAME:
TITLE:	TITLE:
DATE:	EXECUTION DATE:
	DATE OF RECEIPT (EFFECTIVE DATE):

SECTION A

PRODUCT DESCRIPTIONS, PRICES AND PAYMENT TERMS

Pictometry International Corp.
 25 Methodist Hill Drive
 Rochester, New York 14623

ORDER #
C2855134

BILL TO
Lee County, GA
Chris Hartley, Billing
102 Starksville Avenue N
Leesburg, GA 31763
(229) 759-6000
chartley@lee.ga.us

SHIP TO
Lee County, GA
Randy Weathersby, GIS Manager
102 Starksville Ave
Leesburg, GA 31763
(229) 759-6000
randy.weathersby@lee.ga.us

CUSTOMER ID	SALES REP	FREQUENCY OF PROJECT
A123383	KLamo	Triennial

FIRST PROJECT					
QTY	PRODUCT NAME	PRODUCT DESCRIPTION	LIST PRICE	DISCOUNT PRICE (%)	AMOUNT ¹
314	Reveal Essentials+ Neighborhood	Provides ortho and oblique imagery at a Neighborhood level. Deliverables include measurable oblique and ortho imagery at a neighborhood resolutions. Color balanced orthomosaic imagery is generated by a fully automated photogrammetric process and delivered digitally in various formats with the associated metadata. Applicable Terms and Conditions: Delivered Content Terms and Conditions of Use Product Parameters: <i>Leaf:</i> Leaf Off: Less than 30% leaf cover	\$ 160.00	\$ 144.00 (10% - Long Term Incentive Discount)	\$ 45,216.00
75	Reveal Essentials+ Property	Provides high resolution ortho and oblique imagery at a Property level. Deliverables include measurable oblique and ortho imagery at a property resolutions. Color balanced orthomosaic imagery is generated by a fully automated photogrammetric process and delivered digitally in various formats with the associated metadata. Applicable Terms and Conditions: Delivered Content Terms and Conditions of Use Product Parameters: <i>Leaf:</i> Leaf Off: Less than 30% leaf cover	\$ 400.00	\$ 340.00 (15% - Long Term Incentive Discount)	\$ 25,500.00
14,500	ChangeFinder - Change Detection and Building Outlines; Digital Parcel File Provided	Building outlines are created from the most-nadir single-frame orthogonal image in a specified newer Pictometry imagery source and classified relative to a specified older imagery source. Pictometry delivers digital building outlines from the newer imagery source and their classification attributes in shapefile and geodatabase formats. Coverage includes only locations specified in a single, customer-provided digital parcel shapefile. Parcels in the specified locations must be generally contiguous. All Pictometry imagery to be used must be licensed or owned by the customer. Final invoiced amount will be adjusted for the actual quantity of records in the parcel file used for production. Use of older non-Pictometry-sourced imagery requires acceptance in advance. Applicable Terms and Conditions: Delivered Content Terms and Conditions of Use	\$ 0.83		\$ 12,035.00

		<p>Product Parameters: <i>Data Source – Base:</i> Customer Imagery <i>Data Source Year – Base:</i> 2017 <i>Data Source – Comparison:</i> Pictometry Imagery <i>Data Source Year – Comparison:</i> 2023 <i>Deck Identification:</i> Included in Building Outlines <i>Regional Status Report Requested:</i></p> <p><i>Modified Technical Specifications:</i> The process is greater than 95% accurate – the standard error rate is 5% for false positives, and 5% for false negatives.</p> <ul style="list-style-type: none"> • False Positive Rate: ratio of buildings with fault state for all Changed/New/Demolished buildings less than or equal to 5.0% • False Negative Rate: ratio of buildings with fault state for Existing buildings less than or equal to 5.0% • The service postulates imagery with low off-nadir (The sides of houses cannot be seen) is used. All problems arising from off-nadir of imagery are out of the specifications. • A higher number of buildings may be attributed as Unknown due to low resolution and/or tree coverage. <p><i>Parameter Changes</i> Prior to commencement of production, Customer may make changes to these product parameters by providing Pictometry with written authorization (email being acceptable).</p>			
1	FutureView Adv Training	<p>Full conference registration to advanced training designed to maximize deployment. Includes hotel room for up to three nights, event registration, and round-trip airfare up to \$500. Customer will be provided with discount code to complete FutureView registration. (Air Travel Restrictions - 30 day advance purchase for airfare, per person round trip airfare at standard coach class rates through Pictometry's travel provider only) Must be redeemed within three years of agreement execution date.</p> <p>Applicable Terms and Conditions: Order Form</p>	\$ 2,499.00		\$ 2,499.00
1	ChangeFinder - Project Fee	<p>This is a flat fee per project. One project set-up fee is required for each Change Detection, Change Detection and Building Outlines, or Building Outline line item in the order.</p> <p>Applicable Terms and Conditions: Order Form</p>	\$ 1,000.00		\$ 1,000.00
1	Pictometry CONNECTAssessment	<p>Pictometry CONNECTAssessment allows a user the ability to log in and access Pictometry ChangeFinder data and Pictometry-hosted imagery libraries, which have been licensed to the Customer and specified elsewhere in this Agreement, via a web-based application. The number of concurrent authorized users is specified in Customer's existing Connect agreement. Access runs concurrent with last activation (and scheduled expiration) of the Customer's existing Connect account. This offering requires an active Pictometry CONNECT account.</p> <p>Applicable Terms and Conditions: Online Services General Terms and Conditions</p>	\$ 5,000.00	\$ 0.00 (100%)	\$ 0.00
3	CONNECT ImageService CA	<p>Connect Image Service - CA (Custom Access) provides access via a secure web mapping service to existing orthomosaics available within Customer's Connect account. This service allows use by Customer each calendar month of a total number of image request</p>	\$ 2,000.00	\$ 0.00 (100%)	\$ 0.00

		<p>transactions equal to the product resulting from multiplying (a) the number of concurrent users authorized to use the Connect Image Service pursuant to this Agreement, by (b) 1500 (such product being the "Monthly Image Request Limit"). To the extent use of the Connect Image Service pursuant to this Agreement results in a total number of image request transactions in excess of the Monthly Image Request Limit, Pictometry may review the usage with Customer, increase the price for Customer's Connect Image Service with Customer's consent or, in Pictometry's discretion, suspend further access by Customer to the Connect Image Service. This offering is provided solely for internal use within Customer's organization. Customer must maintain an active paid Pictometry Connect account in order to utilize the Connect Image Service.</p> <p>Applicable Terms and Conditions: Online Services General Terms and Conditions</p>			
3	Pictometry Connect - CA - 50	<p>Pictometry Connect - CA - 50 (Custom Access) provides up to 50 concurrent authorized users the ability to login and access the Pictometry-hosted custom imagery libraries specified elsewhere in this Agreement via a web-based, server-based or desktop integration. The default deployment is through web-based Pictometry Connect. Term commences on date of activation. The quantity represents the number of years in the Connect term.</p> <p>Applicable Terms and Conditions: Online Services General Terms and Conditions; Software License Agreement</p> <p>Product Parameters: <i>Admin User Name:</i> Randy Weathersby <i>Admin User Email:</i> randy.weathersby@lee.ga.us</p>	\$ 2,200.00	\$ 0.00 (100%)	\$ 0.00
1	RapidAccess - Disaster Response Program	<p>RapidAccess - Disaster Response Program is an emergency response program offering flights after an emergency or disaster. Refer to the attached detailed description of the Disaster Response Program.</p> <p>Applicable Terms and Conditions: Order Form</p>	\$ 0.00		\$ 0.00
1	Oblique Imagery Bundle w/Three (3)Yrs of EFS Maint & Support	<p>Includes digital copy of the Licensed Documentation for the License Software, two (2) End User Training Sessions, one (1) Advanced User Technical Training, one (1) Administration / IT Training Session, fifteen (15) hours of telephone support, one copy of Pictometry Electronic Field Study (EFS) software, latest version, on the storage media specified herein, and access to download updated versions of the EFS Licensed Software for a period of three years from the initial date of shipment of the EFS software, along with a copy of the updated documentation.</p> <p>Applicable Terms and Conditions: Software License Agreement</p>	\$ 0.00		\$ 0.00
389	Reveal Orthomosaic - Combined	<p>This product represents a single orthomosaic, combining tiles of multiple resolutions with the best-available resolution preferred</p> <p>Applicable Terms and Conditions: Delivered Content Terms and Conditions of Use</p> <p>Product Parameters: <i>Leaf:</i> Leaf Off: Less than 30% leaf cover</p>	\$ 0.00		\$ 0.00
1	Pictometry Connect - EarlyAccess	<p>Pictometry Connect - EarlyAccess provides authorized users the ability to login and access the imagery, as specified elsewhere in this agreement, immediately following its preliminary processing and quality control checks and prior to its final processing. Early Access imagery will become available in CONNECT Explorer</p>	\$ 10,000.00	\$ 0.00 (100%)	\$ 0.00

		<p>incrementally as it is processed and it will remain available until final, fully processed imagery is made available through other means. This offering requires an active Pictometry CONNECT account and the current purchase of access to an imagery product.</p> <p>Applicable Terms and Conditions: Online Services General Terms and Conditions</p>			
				SUBTOTAL	\$86,250.00

SECOND PROJECT

QTY	PRODUCT NAME	PRODUCT DESCRIPTION	LIST PRICE	DISCOUNT PRICE (%)	AMOUNT ¹
314	Reveal Essentials+ Neighborhood	<p>Provides ortho and oblique imagery at a Neighborhood level. Deliverables include measurable oblique and ortho imagery at a neighborhood resolutions. Color balanced orthomosaic imagery is generated by a fully automated photogrammetric process and delivered digitally in various formats with the associated metadata.</p> <p>Applicable Terms and Conditions: Delivered Content Terms and Conditions of Use</p> <p>Product Parameters: <i>Leaf:</i> Leaf Off: Less than 30% leaf cover</p>	\$ 160.00	\$ 144.00 (10% - Long Term Incentive Discount)	\$ 45,216.00
75	Reveal Essentials+ Property	<p>Provides high resolution ortho and oblique imagery at a Property level. Deliverables include measurable oblique and ortho imagery at a property resolutions. Color balanced orthomosaic imagery is generated by a fully automated photogrammetric process and delivered digitally in various formats with the associated metadata.</p> <p>Applicable Terms and Conditions: Delivered Content Terms and Conditions of Use</p> <p>Product Parameters: <i>Leaf:</i> Leaf Off: Less than 30% leaf cover</p>	\$ 400.00	\$ 360.00 (10% - Long Term Incentive Discount)	\$ 27,000.00
14,500	ChangeFinder - Change Detection; Digital Parcel File Provided	<p>Existing building outlines from a specified older imagery source are updated and classified relative to the most-nadir single-frame orthogonal image in a specified, newer Pictometry imagery source. Pictometry delivers updated digital building outlines from the newer imagery source and their classification attributes in shapefile and geodatabase formats. Coverage includes only locations specified in a single, customer-provided digital parcel shapefile. Parcels in the specified locations must be generally contiguous. All Pictometry imagery to be used must be licensed or owned by the customer. Final invoiced amount will be adjusted for the actual quantity of records in the parcel file used for production. Use of older non-Pictometry-sourced building outline data requires acceptance in advance.</p> <p>Applicable Terms and Conditions: Delivered Content Terms and Conditions of Use</p> <p>Product Parameters: <i>Data Source – Base:</i> Pictometry Outlines <i>Data Source Year – Base:</i> 2023 <i>Data Source – Comparison:</i> Pictometry Imagery <i>Data Source Year – Comparison:</i> 2026 <i>Deck Identification:</i> Included in Building Outlines <i>Regional Status Report Requested:</i></p>	\$ 0.44		\$ 6,380.00

		<p><i>Modified Technical Specifications:</i></p> <p><i>Parameter Changes</i> Prior to commencement of production, Customer may make changes to these product parameters by providing Pictometry with written authorization (email being acceptable).</p>			
3	Pictometry Connect - CA - 50	<p>Pictometry Connect - CA - 50 (Custom Access) provides up to 50 concurrent authorized users the ability to login and access the Pictometry-hosted custom imagery libraries specified elsewhere in this Agreement via a web-based, server-based or desktop integration. The default deployment is through web-based Pictometry Connect. Term commences on date of activation. The quantity represents the number of years in the Connect term.</p> <p>Applicable Terms and Conditions: Online Services General Terms and Conditions; Software License Agreement</p> <p>Product Parameters: <i>Admin User Name:</i> Randy Weathersby <i>Admin User Email:</i> randy.weathersby@lee.ga.us</p>	\$ 2,200.00	\$ 1,100.00 (50%)	\$ 3,300.00
1	FutureView Adv Training	<p>Full conference registration to advanced training designed to maximize deployment. Includes hotel room for up to three nights, event registration, and round-trip airfare up to \$500. Customer will be provided with discount code to complete FutureView registration. (Air Travel Restrictions - 30 day advance purchase for airfare, per person round trip airfare at standard coach class rates through Pictometry's travel provider only.) Must be redeemed within three years of agreement execution date.</p> <p>Applicable Terms and Conditions: Order Form</p>	\$ 2,499.00		\$ 2,499.00
1	ChangeFinder - Project Fee	<p>This is a flat fee per project. One project set-up fee is required for each Change Detection, Change Detection and Building Outlines, or Building Outline line item in the order.</p> <p>Applicable Terms and Conditions: Order Form</p>	\$ 1,000.00		\$ 1,000.00
389	Reveal Orthomosaic - Combined	<p>This product represents a single orthomosaic, combining tiles of multiple resolutions with the best-available resolution preferred</p> <p>Applicable Terms and Conditions: Delivered Content Terms and Conditions of Use</p> <p>Product Parameters: <i>Leaf:</i> Leaf Off: Less than 30% leaf cover</p>	\$ 0.00		\$ 0.00
1	Oblique Imagery Bundle w/Three (3)Yrs of EFS Maint & Support	<p>Includes digital copy of the Licensed Documentation for the License Software, two (2) End User Training Sessions, one (1) Advanced User Technical Training, one (1) Administration / IT Training Session, fifteen (15) hours of telephone support, one copy of Pictometry Electronic Field Study (EFS) software, latest version, on the storage media specified herein, and access to download updated versions of the EFS Licensed Software for a period of three years from the initial date of shipment of the EFS software, along with a copy of the updated documentation.</p> <p>Applicable Terms and Conditions: Software License Agreement</p>	\$ 0.00		\$ 0.00
1	RapidAccess - Disaster Response Program	<p>RapidAccess - Disaster Response Program is an emergency response program offering flights after an emergency or</p>	\$ 0.00		\$ 0.00

		disaster. Refer to the attached detailed description of the Disaster Response Program. Applicable Terms and Conditions: Order Form			
3	CONNECT ImageService CA	Connect Image Service - CA (Custom Access) provides access via a secure web mapping service to existing orthomosaics available within Customer's Connect account. This service allows use by Customer each calendar month of a total number of image request transactions equal to the product resulting from multiplying (a) the number of concurrent users authorized to use the Connect Image Service pursuant to this Agreement, by (b) 1500 (such product being the "Monthly Image Request Limit"). To the extent use of the Connect Image Service pursuant to this Agreement results in a total number of image request transactions in excess of the Monthly Image Request Limit, Pictometry may review the usage with Customer, increase the price for Customer's Connect Image Service with Customer's consent or, in Pictometry's discretion, suspend further access by Customer to the Connect Image Service. This offering is provided solely for internal use within Customer's organization. Customer must maintain an active paid Pictometry Connect account in order to utilize the Connect Image Service. Applicable Terms and Conditions: Online Services General Terms and Conditions	\$ 2,000.00	\$ 0.00 (100%)	\$ 0.00
1	Pictometry Connect - EarlyAccess	Pictometry Connect - EarlyAccess provides authorized users the ability to login and access the imagery, as specified elsewhere in this agreement, immediately following its preliminary processing and quality control checks and prior to its final processing. Early Access imagery will become available in CONNECT Explorer incrementally as it is processed and it will remain available until final, fully processed imagery is made available through other means. This offering requires an active Pictometry CONNECT account and the current purchase of access to an imagery product. Applicable Terms and Conditions: Online Services General Terms and Conditions	\$ 10,000.00	\$ 0.00 (100%)	\$ 0.00
SUBTOTAL					\$85,395.00

Thank you for choosing Pictometry as your service provider.	TOTAL	\$ 171,645.00
---	--------------	---------------

¹Amount per product = ((1-Discount %) * Qty * List Price)

STANDARD ORTHO MOSAIC PRODUCTS

Pictometry standard ortho mosaic products are produced through automated mosaicking processes that incorporate digital elevation data with individual Pictometry ortho frames to create large-area mosaics on an extremely cost-effective basis. Because these products are produced through automated processes, rather than more expensive manual review and hand-touched corrective processes, there may be inherent artifacts in some of the resulting mosaics. While Pictometry works to minimize such artifacts, the Pictometry standard ortho mosaic products are provided on an 'AS IS' basis with respect to visible cutlines along mosaic seams resulting from the following types of artifacts:

- i. Disconnects in non-elevated surfaces generally caused by inaccurate elevation data;
- ii. Disconnects in elevated surfaces (e.g., roadways, bridges, etc.) generally caused by elevated surfaces not being represented in the elevation data;
- iii. Building intersect and clipping generally caused by buildings not being represented in the elevation data;
- iv. Seasonal variations caused by images taken at different times during a season, or during different seasons;
- v. Ground illumination variations caused by images taken under different illumination (e.g., sunny, high overcast, morning light, afternoon light, etc.) within one flight day or during different flight days;
- vi. Single GSD color variations caused by illumination differences or multiple-aircraft/camera captures;
- vii. Mixed GSD color variations caused by adjacent areas being flown at different ground sample distances (GSDs); and
- viii. Water body color variations caused by multiple individual frames being used to create a mosaic across a body of water (e.g., lakes, ponds, rivers, etc.).

Other Pictometry products may be available that are less prone to such artifacts than the Pictometry standard ortho mosaic products.

Geofences:

FIRST PROJECT

For the Pictometry Connect - CA - 50, CONNECT ImageService CA product(s) in this project, the following geofences apply:
GA Lee (Primary)

SECOND PROJECT

For the Pictometry Connect - CA - 50, CONNECT ImageService CA product(s) in this project, the following geofences apply:
GA Lee (Primary)

FEES; PAYMENT TERMS

All amounts due to Pictometry pursuant to this Agreement (“Fees”) are expressed in United States dollars and do not include any duties, taxes (including, without limitation, any sales, use, ad valorem or withholding, value added or other taxes) or handling fees, all of which are in addition to the amounts shown above and, to the extent applicable to purchases by Customer, shall be paid by Customer to Pictometry without reducing any amount owed to Pictometry unless documents satisfactory to Pictometry evidencing exemption from such taxes is provided to Pictometry prior to billing. To the extent any amounts properly invoiced pursuant to this Agreement are not paid within thirty (30) days following the invoice due date, such unpaid amounts shall accrue, and Customer shall pay, interest at the rate of 1.5% per month (or at the maximum rate allowed by law, if less). In addition, Customer shall pay Pictometry all costs Pictometry incurs in collecting past due amounts due under this Agreement including, but not limited to, attorneys’ fees and court costs.

FIRST PROJECT

Due at Signing	\$7,187.50
Due at Initial Shipment of Imagery	\$21,562.50
Due at First Anniversary of Shipment of Imagery	\$28,750.00
Due at Second Anniversary of Shipment of Imagery	\$28,750.00
Total Payments	\$86,250.00

SECOND PROJECT

Due at Initial Shipment of Imagery	\$28,465.00
Due at First Anniversary of Shipment of Imagery	\$28,465.00
Due at Second Anniversary of Shipment of Imagery	\$28,465.00
Total Payments	\$85,395.00

RapidAccess—Disaster Response Program (“DRP”)

Customer is eligible for DRP described below from the Effective Date through the second anniversary of the initial Project delivery. Following payment to Pictometry of amounts due with respect to each subsequent Project, Customer will be eligible for the then-current DRP for a period of two years from delivery of such subsequent Project. Customer must be in good-standing with Pictometry to maintain eligibility for DRP.

A. Disaster Coverage Imagery at No Additional Charge – Pictometry will, upon request of Customer and at no additional charge, provide standard quality imagery of up to 200 square miles of affected areas (as determined by Pictometry) upon the occurrence of any of the following events during any period Customer is eligible for DRP:

- **Hurricane:** areas affected by hurricanes of Category 2 and higher.
- **Tornado:** areas affected by tornados rated EF4 and higher.
- **Terrorist:** areas affected by damage from terrorist attack.
- **Earthquake:** areas affected by damage to critical infrastructure resulting from earthquakes measured at 6.0 or higher on the Richter scale.
- **Tsunami:** areas affected by damage to critical infrastructure resulting from tsunamis.

B. Discounted Rate – Coverage for areas affected by the events set forth above exceeding 200 square miles will be, subject to Pictometry resource availability, offered to Customer at the then current DRP rates. Also, coverage for areas affected by hurricanes below Category II, tornadoes below EF4 or earthquakes rated below 6.0 on the Richter scale will be, subject to Pictometry resource availability, offered to Customer at the then current DRP rates.

C. Online Services – Use of Pictometry Connect Explorer™ – Pictometry’s DRP includes the use of Connect Explorer for a term of ninety days from the date of delivery of the DRP imagery. Customer shall have access to the DRP imagery for as long as they maintain an active Connect account.

**PICTOMETRY DELIVERED CONTENT
TERMS AND CONDITIONS OF USE**

These Pictometry Delivered Content Terms and Conditions of Use (the "Delivered Content Terms and Conditions"), in combination with the corresponding Agreement into which these terms are incorporated, collectively set forth the terms and conditions that govern use of Delivered Content (as hereinafter defined) for use within computing environments operated by parties other than Pictometry. As used in the Delivered Content Terms and Conditions the terms "you" and "your" in uppercase or lowercase shall mean the Customer that entered into the Agreement into which the Delivered Content Terms and Conditions are incorporated.

1. DEFINITIONS

- 1.1 "Authorized Subdivision" means, if you are a county or a non-state consortium of counties, any political unit or subdivision located totally or substantially within your boundaries that you authorize to have access to Delivered Content pursuant to the Delivered Content Terms and Conditions.
- 1.2 "Authorized System" means a workstation or server that meets each of the following criteria (i) it is owned or leased by you or an Authorized Subdivision, (ii) it is located within and only accessible from facilities that are owned or leased by you or an Authorized Subdivision, and (iii) it is under the control of and may only be used by you or Authorized Subdivisions.
- 1.3 "Authorized User" means any employee of you or Authorized Subdivisions that is authorized by you to have access to the Delivered Content through an Authorized System.
- 1.4 "Delivered Content" means the images, metadata, data layers, models, reports and other geographic or structural visualizations or embodiments included in, provided with, or derived from the information delivered to you by or on behalf of Pictometry pursuant to the Agreement.
- 1.5 "Project Participant" means any employee or contractor of persons or entities performing services for compensation for you or an Authorized Subdivision that has been identified by written notice to Pictometry prior to being granted access to Delivered Content and, unless Pictometry expressly waives such requirement for any individual, has entered into a written agreement with Pictometry authorizing such access.

2. GRANT OF RIGHTS; RESTRICTIONS ON USE; OWNERSHIP

- 2.1 Subject to the terms and conditions of the Agreement, you are granted nonexclusive, nontransferable, limited rights to:
 - (a) install the Delivered Content on Authorized Systems;
 - (b) permit access and use of the Delivered Content through Authorized Systems by:
 - (i) Authorized Users for performance of public responsibilities of you or Authorized Subdivisions that are to be performed entirely within facilities of you or Authorized Subdivisions;
 - (ii) Project Participants under the supervision of Authorized Users for performance of tasks or preparation of materials using only hard copies (or jpg copies) of Delivered Content solely for fulfilling public responsibilities of you or Authorized Subdivisions to be performed entirely within facilities of you or Authorized Subdivisions; and
 - (iii) individual members of the public, but only through Authorized Users and solely for the purpose of making hard copies or jpg copies of images of individual properties or structures (but not bulk orders of multiple properties or structures) to the individual members of the public requesting them.
- 2.2 You may not reproduce, distribute or make derivative works based upon the Delivered Content in any medium, except as expressly permitted in the Delivered Content Terms and Conditions.
- 2.3 You may not offer any part of the Delivered Content for commercial resale or commercial redistribution in any medium.
- 2.4 You may not distribute or otherwise make available any Delivered Content to Google or its affiliates, either directly or indirectly.
- 2.5 You may not exploit the goodwill of Pictometry, including its trademarks, service marks, or logos, without the express written consent of Pictometry.
- 2.6 You may not remove, alter or obscure copyright notices or other notices contained in the Delivered Content.
- 2.7 All right, title, and interest (including all copyrights, trademarks and other intellectual property rights) in Delivered Content in all media belong to Pictometry or its third party suppliers. Neither you nor any users of the Delivered Content acquire any proprietary interest in the Delivered Content, or any copies thereof, except the limited use rights granted herein.

3. OBLIGATIONS OF CUSTOMER

- 3.1 **Geographic Data.** If available, you agree to provide to Pictometry geographic data in industry standard format (e.g., shape, DBF) including, but not limited to, digital elevation models, street centerline maps, tax parcel maps and centroids, which data, to the extent practicable, shall be incorporated into the Delivered Content. You agree that any of this data that is owned by you may be distributed and modified by Pictometry as part of its products and services, provided that at no time shall Pictometry claim ownership of that data.
- 3.2 **Notification.** You shall (a) notify Pictometry in writing of any claims or proceedings involving any of the Delivered Content within ten (10) days after you learn of the claim or proceeding, and (b) report promptly to Pictometry all claimed or suspected defects in Delivered Content.
- 3.3 **Authorized User Compliance.** You shall at all times be responsible for compliance by each Authorized User with the Delivered Content Terms and Conditions.
- 3.4 **Authorized Subdivision Compliance.** You shall at all times be responsible for compliance by each Authorized Subdivision with the Delivered Content Terms and Conditions.
- 3.5 **Project Participants.** Each notice to Pictometry identifying a potential Project Participant shall include a detailed description of the scope and nature of the Project Participants' planned work and the intended use of the Delivered Content in such work. Pictometry retains the right to restrict or revoke access to Delivered Content by any Project Participant who does not comply with the terms of the Delivered Content Terms and Conditions.

4. LICENSE DURATION; EFFECT OF TERMINATION

- 4.1 **Term.** The license granted to you in the Delivered Content Terms and Conditions is perpetual, subject to Pictometry's right to terminate the license in the event you do not pay in full the Fees specified elsewhere in the Agreement, the Agreement is terminated for any reason other than a breach of the Agreement by Pictometry, or as otherwise provided in the Agreement.
- 4.2 **Effect of Termination.** Upon termination of the license granted to you in the Delivered Content Terms and Conditions, you shall immediately cease all use of the Delivered Content, promptly purge all copies of the Delivered Content from all workstations and servers on which any of it may be stored or available at the time, and return hard drive/media containing Delivered Content to Pictometry.

5. TRADEMARKS; CONFIDENTIALITY

- 5.1 **Use of Pictometry's Marks.** You agree not to attach any additional trademarks, trade names, logos or designations to any Delivered Content or to any copies

of any Delivered Content without prior written approval from Pictometry. You may, however, include an appropriate government seal and your contact information so long as the seal and contact information in no way obscure or deface the Pictometry marks. You further agree that you will not use any Pictometry trademark, trade name, logo, or designation in connection with any product or service other than the Delivered Content. Your nonexclusive right to use Pictometry's trademarks, trade name, logos, and designations are coterminous with the license granted to you in the Delivered Content Terms.

- 5.2 Confidentiality of Delivered Content.** The Delivered Content consists of commercially valuable, proprietary products owned by Pictometry, the design and development of which reflect an investment of considerable time, effort, and money. The Delivered Content is treated by Pictometry as confidential and contains substantial trade secrets of Pictometry. You agree that you will not disclose, provide a copy of, or disseminate the Delivered Content (other than as expressly permitted in the Delivered Content Terms and Conditions) or any part thereof to any person in any manner or for any purpose inconsistent with the license granted to you in the Delivered Content Terms and Conditions. You agree to use your best efforts to assure that your personnel, and any others afforded access to the Delivered Content, protect the Delivered Content against unauthorized use, disclosure, copying, and dissemination, and that access to the Delivered Content and each part thereof will be strictly limited.

6. LIMITED WARRANTY; DISCLAIMER OF WARRANTIES

- 6.1 Limited Warranties; Exclusive Remedy.** Pictometry warrants that the Delivered Content will contain true and usable copies of the designated imagery as of the date of capture. As the sole and exclusive remedy for any breach of the foregoing warranty, Pictometry shall use reasonable efforts to correct any deficiency that precludes use of the Delivered Content in the manner intended.
- 6.2 Disclaimer of Other Warranties.** Except as provided in Section 6.1, above, THE DELIVERED CONTENT IS PROVIDED TO YOU "AS IS" AND "WITH ALL FAULTS." PICTOMETRY MAKES NO OTHER WARRANTIES OR REPRESENTATIONS OF ANY KIND, EXPRESS, IMPLIED, OR STATUTORY. ALL IMPLIED WARRANTIES, INCLUDING BUT NOT LIMITED TO WARRANTIES OF PERFORMANCE, MERCHANTABILITY, FITNESS FOR A PARTICULAR PURPOSE, AND ACCURACY, ARE HEREBY DISCLAIMED AND EXCLUDED BY PICTOMETRY.
- 6.3 Limitation of Liability.** With respect to any other claims that you may have or assert against Pictometry on any matter relating to the Delivered Content, the total liability of Pictometry shall, in the aggregate, be limited to the aggregate amount received by Pictometry in payment for Delivered Content during the immediately preceding twenty-four (24) month period.

7. MISCELLANEOUS PROVISIONS

- 7.1 Restricted Rights.** [NOT APPLICABLE]
- 7.2 Governing Law.** This License Agreement shall be governed by and interpreted in accordance with the laws of the State of New York, excluding its conflicts of law principles.

[END OF DELIVERED CONTENT TERMS AND CONDITIONS]

**PICTOMETRY ONLINE SERVICES
GENERAL TERMS AND CONDITIONS**

These Pictometry Online Services General Terms and Conditions (the "General Terms and Conditions"), in combination with the corresponding Pictometry order form, if any, collectively constitute the license agreement (the "License Agreement") that governs your use of the Pictometry online services (the "Online Services"), the images available in the Online Services, and all associated metadata and data layers included in, provided with, or derived from those images (the "Licensed Content") provided by Pictometry International Corp. and its affiliated companies (collectively, "Pictometry"). The terms "you" and "your" in uppercase or lowercase shall mean the individual, entity (e.g., corporation, limited liability company, partnership, sole proprietor, etc.) or government agency entering into the License Agreement.

1. GRANT OF RIGHTS; RESTRICTIONS ON USE; OWNERSHIP

- 1.1 You are granted a nonexclusive, nontransferable, limited right to access and use the Online Services and the Licensed Content obtained or derived from the Online Services solely for your internal business purposes and not for resale or redistribution. The rights granted to you include, subject to the restrictions set forth below and on the Order Form, the right to copy limited portions of the Licensed Content onto your computer to facilitate preparation of hardcopies and work product records, and the right to make hardcopies of the Licensed Content, provided that the Licensed Content and the permitted copies thereof may not be sold, leased, loaned, distributed, or copied for use by anyone other than you.
- 1.2 You may not make the Online Services available to any other party.
- 1.3 You may not copy the Licensed Content or portions thereof onto any computer or storage device or media for the purpose of creating or maintaining one or more databases of that content for use in substitution for subsequent access to the content through the Online Services.
- 1.4 You may not distribute or otherwise make available any Licensed Content to Google or its affiliates, either directly or indirectly.
- 1.5 You may not exploit the goodwill of Pictometry, including its trademarks, service marks, or logos, without the express written consent of Pictometry.
- 1.6 You may not remove, alter or obscure copyright notices or other notices contained in the Licensed Content.
- 1.7 You may not offer any part of the Online Services or the Licensed Content for commercial resale or commercial redistribution in any medium.
- 1.8 You may not use the Online Services or the Licensed Content to compete with any businesses of Pictometry.
- 1.9 You may not use information included in the Online Services or the Licensed Content to determine an individual consumer's eligibility for (a) credit or insurance for personal, family, or household purposes; (b) employment; or (c) a government license or benefit. The term "consumer" is defined in the United States Fair Credit Reporting Act at 15 USC §1681.
- 1.10 You may not access the Online Services via mechanical, programmatic, robotic, scripted or any other automated means. Unless otherwise agreed by Pictometry in writing, use of the Online Services is permitted only via manually conducted, discrete, human-initiated individual search and retrieval activities.
- 1.11 All right, title, and interest (including all copyrights, trademarks and other intellectual property rights) in the Online Services and the Licensed Content in all media belong to Pictometry or its third party suppliers. Neither you nor any users of the Online Services or the Licensed Content acquire any proprietary interest in the Online Services, the Licensed Content, or any copies thereof, except the limited use rights granted herein.

2. ACCESS TO SERVICES

- 2.1 Only you, your employees, and temporary or contract employees dedicated to performing work exclusively for you (each, an "Eligible User" and collectively, the "Eligible Users") are eligible to access and use the Online Services and the Licensed Content pursuant to the License Agreement. Each Eligible User to be provided access to the Online Service shall be assigned a unique login/password ("Pictometry Credential") for purposes of accessing the Online Services. You agree that each Pictometry Credential shall only be used by the Eligible User to whom it was originally assigned and that Pictometry Credentials may not be shared with, or used by, any other person, including other Eligible Users. You will promptly deactivate an Eligible User's Pictometry Credential in the event the Eligible User no longer meets the eligibility requirements or you otherwise wish to terminate the Eligible User's access to the Online Services. You are responsible for all use of the Online Services accessed with Pictometry Credentials issued to your Eligible Users, including associated charges, whether by Eligible Users or others. You will use reasonable commercial efforts to prevent unauthorized use of Pictometry Credentials assigned to your Eligible Users and will promptly deactivate any Pictometry Credentials you suspect are lost, stolen, compromised, or misused.
- 2.2 The Online Services, the Licensed Content, and features and functionality within the Online Services may be enhanced, added to, withdrawn, or otherwise changed by Pictometry without notice.
- 2.3 You are aware and understand that any user data collected or stored by the Online Services may be accessed by US law enforcement agencies under the US PATRIOT Act. You hereby release, and agree to hold Pictometry harmless from, all claims against Pictometry with respect to such access.

3. DISCLAIMERS

- 3.1 The Online Services and the Licensed Content are provided for visualization purposes only, are not authoritative or definitive, and do not constitute professional engineering or surveying services.
- 3.2 The Online Services and the Licensed Content are not to be relied upon to precisely locate or determine property boundaries and should not be used in lieu of a professional survey where the accuracy of measurements, distance, height, angle, area and volume, may have significant consequences.
- 3.3 All measurements and reports generated by the Online Services or from the Licensed Content are based upon second order visualization and measurement data that do not provide authoritative or definitive measurement results suitable for professional engineering or surveying purposes.
- 3.4 Contour information obtained from the Online Services or contained in the Licensed Content is generated from undersampled elevation data, is provided for informational purposes only, and is not suitable for use as the basis for hydrographic computations, estimations or analyses.
- 3.5 While the Online Services and the Licensed Content may be considered useful supplements for life critical applications, they are not designed or maintained to support such applications and Pictometry and its third party suppliers of the Online Services and the Licensed Content hereby disclaim all liability for damages claims and expenses arising from such use.
- 3.6 Your reliance on the Online Services and the Licensed Content should only be undertaken after an independent review of their accuracy, completeness, efficacy, timeliness and adequacy for your intended purpose.
- 3.7 Pictometry and each third party supplier of any portion of the Online Services or the Licensed Content assume no responsibility for any consequences resulting from the use of the Online Services or the Licensed Content.
- 3.8 Pictometry and each third party supplier of any portion of the Online Services or the Licensed Content hereby disclaim all liability for damages, claims and expenses arising from or in any way related to the accuracy or availability of the Online Services and the Licensed Content.
- 3.9 By accepting these General Terms and Conditions or by using the Online Services or the Licensed Content, you waive any and all rights you may have against Pictometry, each third party supplier of any portion of the Online Services or the Licensed Content, and each of their directors, officers, members and employees, arising out of use of or reliance upon the Online Services or the Licensed Content.

4. LIMITED WARRANTY

- 4.1 Pictometry represents and warrants that it has the right and authority to make the Online Services and the Licensed Content available to you and your Eligible Users as authorized expressly by this License Agreement
- 4.2 EXCEPT AS OTHERWISE PROVIDED IN SECTION 4.1, THE ONLINE SERVICES AND LICENSED CONTENT ARE PROVIDED ON AN "AS IS", "AS AVAILABLE" BASIS AND PICTOMETRY AND EACH THIRD PARTY SUPPLIER OF LICENSED CONTENT EXPRESSLY DISCLAIM ALL OTHER WARRANTIES, INCLUDING THE WARRANTIES OF MERCHANTABILITY AND FITNESS FOR A PARTICULAR PURPOSE.

5. LIMITATION OF LIABILITY

- 5.1 No Covered Party (as defined below) shall be liable for any loss, injury, claim, liability, or damage of any kind resulting in any way from (a) any errors in or omissions from the Online Services or the Licensed Content, (b) the unavailability or interruption of the Online Services or any features thereof or the Licensed Content, (c) your or an Eligible User's use of the Online Services or the Licensed Content, (d) the loss or corruption of any data or equipment in connection with the Online Services or the Licensed Content, (e) the content, accuracy, or completeness of the Licensed Content, all regardless of whether you received assistance in the use of the Online Service from a Covered Party, (f) any delay or failure in performance beyond the reasonable control of a Covered Party, or (g) any content retrieved from the Internet even if retrieved or linked to from within the Online Services
- 5.2 "Covered Party" means (a) Pictometry and any officer, director, employee, subcontractor, agent, successor, or assign of Pictometry; and (b) each third party supplier of any Licensed Content, third party alliance entity, their affiliates, and any officer, director, employee, subcontractor, agent, successor, or assign of any third party supplier of any Licensed Content or third party alliance entity and their affiliates.
- 5.3 TO THE FULLEST EXTENT PERMISSIBLE BY APPLICABLE LAW, UNDER NO CIRCUMSTANCES WILL THE AGGREGATE LIABILITY OF THE COVERED PARTIES IN CONNECTION WITH ANY CLAIM ARISING OUT OF OR RELATING TO THE ONLINE SERVICES OR THE LICENSED CONTENT OR THIS LICENSE AGREEMENT EXCEED THE LESSER OF YOUR ACTUAL DIRECT DAMAGES OR THE AMOUNT YOU PAID FOR THE ONLINE SERVICES IN THE TWELVE MONTH PERIOD IMMEDIATELY PRECEDING THE DATE THE CLAIM AROSE. YOUR RIGHT TO MONETARY DAMAGES IN THAT AMOUNT SHALL BE IN LIEU OF ALL OTHER REMEDIES WHICH YOU MAY HAVE AGAINST ANY COVERED PARTY.
- 5.4 TO THE FULLEST EXTENT PERMISSIBLE BY APPLICABLE LAW, NEITHER YOU NOR THE COVERED PARTIES WILL BE LIABLE FOR ANY SPECIAL, INDIRECT, INCIDENTAL, OR CONSEQUENTIAL DAMAGES OF ANY KIND WHATSOEVER (INCLUDING, WITHOUT LIMITATION, ATTORNEYS' FEES) IN ANY WAY DUE TO, RESULTING FROM, OR ARISING IN CONNECTION WITH THE ONLINE SERVICES, THE LICENSED CONTENT, OR THE FAILURE OF ANY COVERED PARTY TO PERFORM ITS OBLIGATIONS. THE FOREGOING LIMITATION OF LIABILITY SHALL NOT APPLY TO A PARTY'S INDEMNITY OBLIGATIONS OR YOUR (AND YOUR ELIGIBLE USERS') INFRINGEMENT OF INTELLECTUAL PROPERTY OR MISAPPROPRIATION OF PROPRIETARY DATA BELONGING TO PICTOMETRY OR ITS THIRD PARTY SUPPLIERS.
- 5.5 Notwithstanding anything to the contrary in this Section 5:
 - (a) If there is a breach of the warranty in Section 4.1 above, then Pictometry, at its option and expense, shall either defend or settle any action and hold you harmless against proceedings or damages of any kind or description based on a third party's claim of patent, trademark, service mark, copyright or trade secret infringement related to use of the Online Services or the Licensed Content, asserted against you by such third party provided: (i) all use of the Online Services and the Licensed Content was in accordance with this License Agreement; (ii) the claim, cause of action or infringement was not caused by you modifying or combining the Online Services or the Licensed Content with or into other products, applications, images or data not approved by Pictometry; (iii) you give Pictometry prompt notice of such claim, and (iv) you give Pictometry the right to control and direct the investigation, defense and settlement of such claim. You, at Pictometry's expense, shall reasonably cooperate with Pictometry in connection with the foregoing.
 - (b) In addition to Section 5.5(a), if the Online Services, the operation thereof or the Licensed Content become, or in the opinion of Pictometry are likely to become, the subject of a claim of infringement, Pictometry may, at its option and expense, either: (i) procure for you the right to continue using the Online Services or the Licensed Content, (ii) replace or modify the Online Services or the Licensed Content so that they become non-infringing; or (iii) terminate the License Agreement on notice to you and grant you a pro-rata refund or credit (whichever is applicable) for any pre-paid fees or fixed charges.
 - (c) The provisions of Sections 5.5(a) and (b) shall constitute your sole and exclusive remedy for the respective matters specified therein.

6. MISCELLANEOUS

- 6.1 The terms and conditions of this License Agreement may be changed from time to time immediately upon notice to you. If any changes are made to this License Agreement, such changes will: (a) only be applied prospectively, and (b) not be specifically directed against you or your Eligible Users but will apply to all similarly situated Pictometry customers using the Online Services. You may terminate this License Agreement upon written notice to Pictometry if any change to the terms and conditions of this License Agreement is unacceptable to you. For termination to be effective under this Section 6.1, written notice of termination must be provided to Pictometry within 90 days of the effective date of the change. Continued use of the Online Services following the effective date of any change constitutes acceptance of the change, but does not affect the foregoing termination right. Except as provided above, this License Agreement may not be supplemented, modified or otherwise revised unless signed by duly authorized representatives of both parties. Furthermore, this License Agreement may not be supplemented, modified or otherwise revised by email exchange, even if the email contains a printed name or signature line bearing signature-like font. The foregoing does not prohibit the execution of electronic contracts bearing electronic signatures of authorized representatives of both parties, provided such signatures include digital certifications or are otherwise authenticated.
- 6.2 In the event of a breach of this License Agreement by you, any Eligible User or someone using the Pictometry Credential of an Eligible User, Pictometry may temporarily suspend or discontinue providing access to the Online Services to any or all Eligible Users without notice and Pictometry may pursue any other legal remedies available to it.
- 6.3 All notices and other communications hereunder shall be in writing or displayed electronically in the Online Services by Pictometry. Notices shall be deemed to have been properly given on the date deposited in the mail, if mailed, on the date first made available, if displayed in the Online Services; or on the date received, if delivered in any other manner. Legal notices to Pictometry should be sent to Pictometry, Attn: General Counsel, 25 Methodist Hill Drive, Rochester, New York 14623.
- 6.4 The failure of you, Pictometry, or any third party supplier of the Online Services or any Licensed Content to enforce any provision hereof shall not constitute or be construed as a waiver of such provision or of the right to enforce it at a later time.
- 6.5 Neither you nor any Eligible User may assign or otherwise transfer your rights or delegate your duties under this License Agreement without the prior written consent of Pictometry. Any attempt by you or any Eligible User to assign, transfer or delegate your rights or obligations under this License Agreement without Pictometry's consent shall be void, and shall also void the limited license granted to you by this License Agreement. This License Agreement and any amendment thereto shall be binding on, and will inure to the benefit of the parties and their respective successors and permitted assigns.
- 6.6 This License Agreement shall be governed by and interpreted in accordance with the laws of the State of New York, excluding its conflicts of law principles. Unless you are a government entity, in the event that any legal proceedings are commenced with respect to any matter arising under this License Agreement,

the parties specifically consent and agree that the courts of the State of New York or, in the alternative, the Federal Courts located in the State of New York shall have exclusive jurisdiction over each of the parties and over the subject matter of any such proceedings, and that the venue of any such action shall be in Monroe County, New York or the U.S. District Court for the Western District of New York, as applicable.

- 6.7 This License Agreement will be enforced to the fullest extent permitted by applicable law. If any provision of this License Agreement is held to be invalid or unenforceable to any extent, then (a) such provision will be interpreted, construed and reformed to the extent reasonably required to render it valid, enforceable and consistent with its original intent and (b) such invalidity or unenforceability will not affect any other provision of this License Agreement.
- 6.8 Where applicable, each affiliated company of Pictometry and each third party supplier of the Online Services or any Licensed Content has the right to assert and enforce the provisions of this License Agreement directly on its own behalf as a third party beneficiary.
- 6.9 In the event of a breach of your obligations under this License Agreement or your payment obligations with respect to access to the Online Services or the Licensed Content, you agree to pay all of Pictometry's costs of enforcement and collection, including court costs and reasonable attorneys' fees.
- 6.10 This License Agreement constitutes the entire agreement of the parties with respect to its subject matter and replaces and supersedes any prior written or verbal communications, representations, proposals or quotations relating to that subject matter.

[END OF ONLINE SERVICES GENERAL TERMS AND CONDITIONS]

**PICTOMETRY SOFTWARE
LICENSE AGREEMENT**

PLEASE READ THIS SOFTWARE LICENSE AGREEMENT ("LICENSE") CAREFULLY BEFORE DOWNLOADING, INSTALLING OR USING THE SOFTWARE. BY USING THE SOFTWARE, YOU AGREE TO THE TERMS OF THIS LICENSE. IF YOU DO NOT AGREE TO THE TERMS OF THIS LICENSE, DO NOT DOWNLOAD, INSTALL OR USE THE SOFTWARE.

1. **GENERAL.** The software ("Pictometry Software") and any written materials that accompany the software ("Documentation") in any media or form are licensed, not sold, to you by Pictometry International Corp. ("Pictometry") for use only under the terms of this License. Pictometry reserves all rights not expressly granted to you in this License.
2. **LICENSE.** Subject to the terms and conditions of this License, you are granted a limited, non-transferable, terminable, non-sublicenseable, non-exclusive license to install and use the Pictometry Software and the Documentation (collectively, the "Proprietary Materials") solely for internal use. Use of the functionality provided by the Pictometry Software other than for your internal use is prohibited, except with the prior written approval of Pictometry. You may make one copy of the Pictometry Software in machine-readable form for backup purposes only; provided that the backup copy must include all copyright and other proprietary notices contained in the original. You will not and will not enable others to decompile, reverse engineer, disassemble, attempt to derive the source code of, decrypt, modify, create derivative works of, or tamper with or disable any security or monitoring features within the Pictometry Software. Any attempt to do so is a violation of the rights of Pictometry and its licensors.
3. **TITLE.** The Proprietary Materials are confidential information of, trade secrets of, and are proprietary to Pictometry. Title to the Proprietary Materials is and will remain in Pictometry and its licensors. All applicable rights to patents, copyrights, trademarks, trade secrets, and other intellectual property rights in the Proprietary Materials are and will remain in Pictometry and its licensors. You will not assert any right, title or interest in the Proprietary Materials provided to you under this License, except for the express license granted to you hereunder. You will not remove any copyright or other proprietary notice or legend contained on or included in any Proprietary Materials and you will reproduce all such information on all copies made hereunder. You will keep the Proprietary Materials free of all claims, liens and encumbrances.
4. **DISCLAIMERS OF WARRANTY.** USE OF THE PICTOMETRY SOFTWARE IS AT YOUR SOLE RISK. TO THE MAXIMUM EXTENT PERMITTED BY APPLICABLE LAW, THE PICTOMETRY SOFTWARE IS PROVIDED "AS IS", WITH ALL FAULTS AND WITHOUT WARRANTY OF ANY KIND, AND PICTOMETRY HEREBY DISCLAIMS ALL WARRANTIES WITH RESPECT TO THE PICTOMETRY SOFTWARE, WHETHER EXPRESS, IMPLIED OR STATUTORY, INCLUDING, BUT NOT LIMITED TO, THE IMPLIED WARRANTIES OF MERCHANTABILITY AND OF FITNESS FOR A PARTICULAR PURPOSE. PICTOMETRY DOES NOT WARRANT THAT THE FUNCTIONS CONTAINED IN OR PROVIDED BY THE PICTOMETRY SOFTWARE WILL MEET YOUR REQUIREMENTS, THAT THE OPERATION OF THE PICTOMETRY SOFTWARE WILL BE UNINTERRUPTED OR ERROR-FREE, OR THAT DEFECTS IN THE PROPRIETARY MATERIALS WILL BE CORRECTED.
5. **LIMITATION OF LIABILITY.** IN NO EVENT WILL PICTOMETRY BE LIABLE FOR ANY INCIDENTAL, SPECIAL, INDIRECT OR CONSEQUENTIAL DAMAGES WHATSOEVER, INCLUDING, WITHOUT LIMITATION, DAMAGES FOR LOSS OF PROFITS, LOSS OF DATA, BUSINESS INTERRUPTION OR ANY OTHER COMMERCIAL DAMAGES OR LOSSES ARISING OUT OF OR RELATED TO YOUR USE OR INABILITY TO USE THE PICTOMETRY SOFTWARE, HOWEVER CAUSED, REGARDLESS OF THE THEORY OF LIABILITY (CONTRACT, TORT OR OTHERWISE), EVEN IF PICTOMETRY HAS BEEN ADVISED OF THE POSSIBILITY OF SUCH DAMAGES. IN NO EVENT WILL PICTOMETRY'S TOTAL LIABILITY TO YOU FOR ALL DAMAGES (OTHER THAN AS MAY BE REQUIRED BY APPLICABLE LAW IN CASES INVOLVING PERSONAL INJURY) CAUSED BY, ARISING OUT OF OR IN ANY WAY RELATED TO THE PICTOMETRY SOFTWARE EXCEED THE AMOUNT OF FIFTY DOLLARS (\$50.00). THE FOREGOING LIMITATIONS WILL APPLY EVEN IF THE ABOVE STATED REMEDY FAILS OF ITS ESSENTIAL PURPOSE.
6. **TERMINATION.** This License will terminate automatically without notice from Pictometry if you fail to comply with any term of this License. Upon the termination of this License, you will cease all use of the Pictometry Software and destroy all copies, full or partial, of the Proprietary Materials.
7. **MISCELLANEOUS PROVISIONS.**
 - A. **Restricted Rights.** Pictometry Software acquired with United States Government funds or intended for use within or for any United States federal agency is provided with "Restricted Rights" as defined in DFARS 252.227-7013, Rights in Technical Data and Computer Software and FAR 52.227-14, Rights in Data-General, including Alternate III, as applicable. Pictometry must be notified in advance of any license grants to United States federal governmental entities. The Pictometry Software is developed for general use in a variety of applications and is not developed or intended for use in any inherently dangerous applications or applications that could lead to property damage, personal injury or death. If you use the Pictometry Software in such applications, then you will be responsible for taking all appropriate fail-safe, backup, redundancy, and other measures to ensure the safe use of the Pictometry Software in such applications, including but not limited to, in any nuclear, aviation, mass transit, public safety or medical applications.
 - B. **Foreign Trade Restrictions.** The parties acknowledge that certain information, software technology, accompanying documentation and technical information may be subject to United States export control laws. You will not directly or indirectly export or re-export the Pictometry Software in violation of the Export Administration Regulations of the U.S. Department of Commerce.
 - C. **Governing Law.** This License will be governed by and interpreted in accordance with the laws of the State of New York, excluding its conflict of laws principles.
 - D. **Assignment.** You may not assign this License without Pictometry's prior written consent. Any assignment in violation of this License will be null, void and of no force and effect. For all purposes under this License, any merger, consolidation, spin-off, acquisition or change-in-control will be deemed an assignment.
 - E. **Partial Invalidity; Survival.** If any provision of this License is held invalid or unenforceable by competent authority, that provision will be construed so as to be limited or reduced to be enforceable to the maximum extent compatible with the law as it will then appear. The total invalidity or unenforceability of any particular provision of this License will not affect its other provisions and this License will be construed in all respects as if the invalid or unenforceable provision were omitted. The provisions of this License that by their nature would survive its termination will survive indefinitely.

- F. **Force Majeure.** Except with respect to Customer's payment obligations for services delivered, reports delivered or any ongoing subscription payment obligation, each party will be excused from performance under this Agreement, will not be deemed to be in breach hereof, and will have no liability to the other party whatsoever if either party is prevented from performing any of its obligations hereunder, in whole or in part, as a result of a Force Majeure Event. A "Force Majeure Event" means an event or occurrence beyond the control of the nonperforming party, such as an act of God or of the public enemy, embargo or other act of government in either its sovereign or contractual capacity, government regulation, travel ban or request, court order, civil disturbance, terrorism, war, quarantine restriction, epidemic, virus, fire, weather, flood, accident, strike, slowdown, delay in transportation, electrical power outage, interruption or degradation in electronic communications systems, inability to obtain necessary labor, materials or manufacturing facilities, and other similar events. In the event of any delay resulting from a Force Majeure Event, any date of delivery hereunder will be extended for a period equal to the time lost because of the delay.
- G. **Waiver.** No waiver of a breach of any term of this License will be effective unless in writing and duly executed by the waiving party. No such waiver will constitute a waiver of any subsequent breach of the same or any other term of this License. No failure on the part of a party to exercise, and no delay in exercising any of its rights hereunder will operate as a waiver thereof, nor will any single or partial exercise by a party of any right preclude any other or future exercise thereof or the exercise of any other right. No course of dealing between the parties will be deemed effective to modify, amend or discharge any part of this License or the rights or obligations of any party hereunder.
- H. **Entire Agreement; Construction.** This License contains the entire understanding of the parties with respect to the subject matter hereof and supersedes any prior or contemporaneous understandings regarding that subject matter. No amendment to or modification of this License will be binding unless in writing and signed by Pictometry. There are no representations, warranties, or obligations of any party not expressly contained herein. The headings in this License are for convenience only. They do not constitute a portion of this License and will not be used in any construction of it.

[END OF SOFTWARE LICENSE AGREEMENT]

SECTION C

NON-STANDARD TERMS AND CONDITIONS

1. Online Services Eligible Users: Notwithstanding anything in the Online Services General Terms and Conditions incorporated in this Agreement to the contrary, the terms 'Eligible User' and 'Eligible Users' as defined in those Online Services General Terms and Conditions shall, for the purposes of this Agreement, also include each 'Authorized User' as that term is defined in the Delivered Content Terms and Conditions of Use incorporated in this Agreement.

2. Applicable Law: Notwithstanding anything to the contrary set forth elsewhere in this Agreement, this Agreement and any modifications, amendments or alterations shall be interpreted, construed and enforced in all respects in accordance with the laws of the State of Georgia, excluding its conflicts of law principles. Each party irrevocably consents to the exclusive jurisdiction of the courts of the State of Georgia in connection with any action to enforce the provisions of this Agreement, to recover damages or other relief for breach or default under this Agreement, or otherwise arising under or by reason of this Agreement.

3. Non-appropriation of Funds. Notwithstanding anything herein to the contrary, in the event that the funds due for subsequent projects and related deliverables under the terms and conditions of this Agreement are not lawfully appropriated, the following provisions shall apply:

a. Customer shall provide Pictometry with written documentation of non-appropriation of funds from its funding source prior to commencement of a subsequent project;

b. This Agreement shall remain in full force and effect, however commencement of the subsequent project shall be deemed postponed until such time as funds for the subsequent project have been appropriated and all other sums due under the terms and conditions of this Agreement have been paid by Customer. In the event that the postponement exceeds eighteen months, Pictometry reserves the right to terminate any and all obligations with respect to the postponed project and all subsequent projects included in this Agreement; and

c. If Customer, or any party authorized under the terms and conditions of this Agreement to use the licensed products set forth in Section A, is in possession of licensed products for which Pictometry has not been fully compensated in accordance with the payment terms of this Agreement, Customer or such authorized party shall immediately cease use of those licensed products, purge those licensed products from all Customer and authorized party computers, and return those licensed products to Pictometry.

[END OF NON-STANDARD TERMS AND CONDITIONS]

APPENDIX 1

PHOTOGRAMMETRIC PRODUCT SPECIFICATIONS

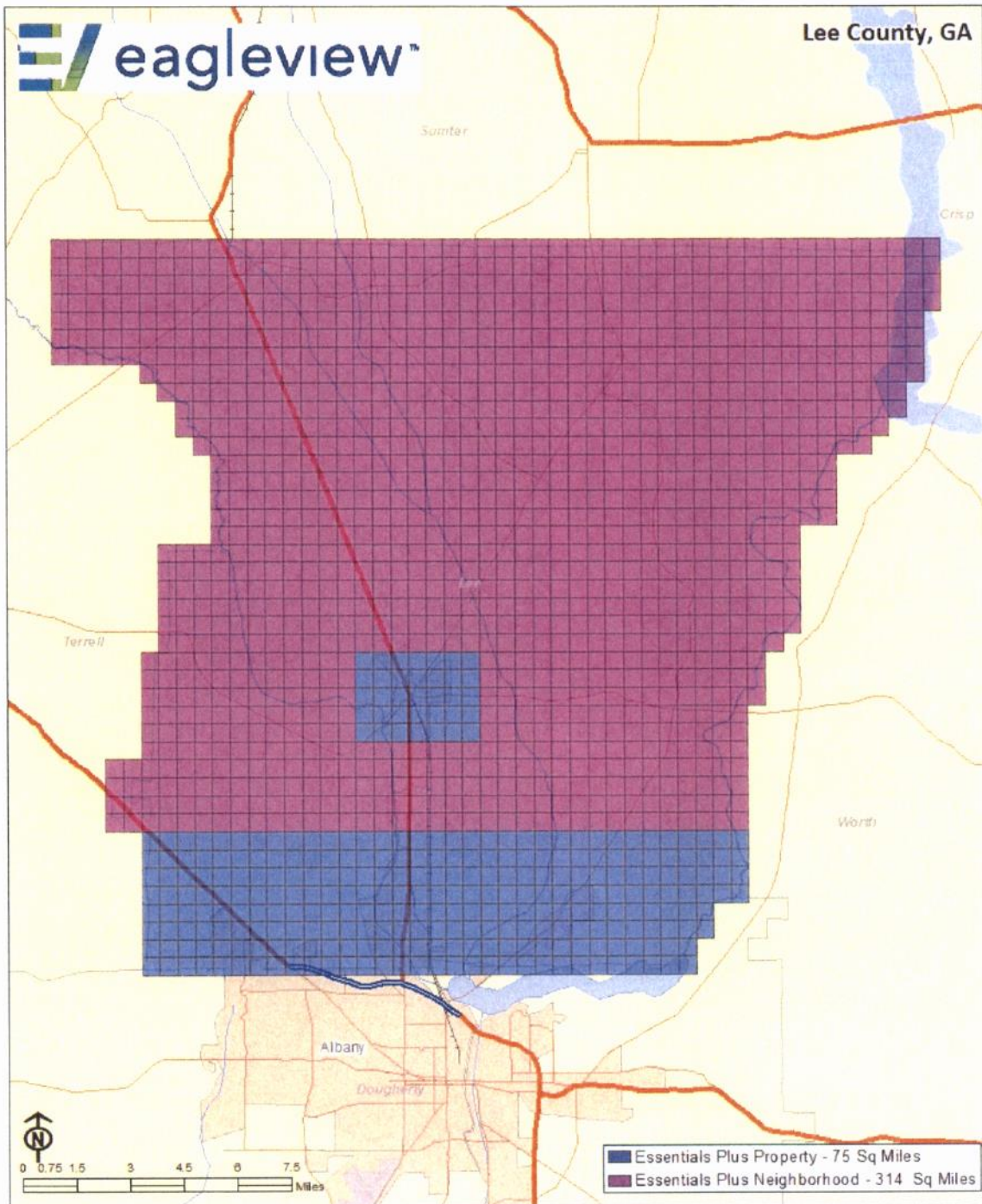
Essentials+ Neighborhood deliverables

Product	Essentials+ Neighborhood
Orthomosaic Specifications	<ul style="list-style-type: none"> • Typical Positional Horizontal Accuracy: 1m at a 95% confidence level • Fully automated photogrammetric orthomosaic. Imagery may contain seamlines • Project-wide color and contrast balancing
Oblique Imagery	<p>Nominal 6in GSD oblique imagery or better:</p> <ul style="list-style-type: none"> • Where available fully automated photogrammetric mosaiced imagery. Imagery may contain seamlines
Metadata and Reporting	<p>Metadata:</p> <ul style="list-style-type: none"> • Metadata generated that meets FGDC Standards upon request • Shapefile(s) with discrete deliverable boundaries and directional metadata
Orthomosaic Deliverable Format (Online)	<p>Resolution:</p> <ul style="list-style-type: none"> • Nominal 6in GSD <p>Access Methods:</p> <ul style="list-style-type: none"> • Available via web-based viewer (Connect) - Contracted separately • Also available via WMS/WMTS (Image Service) - Contracted separately
Orthomosaic Deliverable Format (Physical)	<p>Resolution:</p> <ul style="list-style-type: none"> • Nominal 6in GSD <p>Projection/Coordinate System:</p> <ul style="list-style-type: none"> • Customer Selectable <p>Datum:</p> <ul style="list-style-type: none"> • Customer Selectable <p>File Format:</p> <ul style="list-style-type: none"> • Mosaic Tiles <ul style="list-style-type: none"> ○ Available as JPEG, GeoTIFF, JPEG2000, PNG, ECW, MrSID (All versions) with world file ○ Includes separate Pictometry Map Image (PMI) trailer file • Project-Wide Mosaic <ul style="list-style-type: none"> ○ Available in ECW, MrSID (All versions) format
Oblique Imagery Deliverable Format	<p>Access methods:</p> <ul style="list-style-type: none"> • Available via web-based viewer (Connect) - Contracted separately
Delivery Timeline	<ul style="list-style-type: none"> • Best efforts to make ortho and oblique imagery available online and/or ready for physical delivery within 30 days of capture completion

Essentials+ Property deliverables

Product	Essentials+ Property
Ortho Frame Imagery	<ul style="list-style-type: none"> Nominal 2in GSD ortho imagery, Imagery as good as 1.2in and no worse than 3in
Orthomosaic Specifications	<ul style="list-style-type: none"> Typical Positional Horizontal Accuracy: 1m at a 95% confidence level Fully automated photogrammetric orthomosaic. Imagery may contain seamlines Project-wide color and contrast balancing
Oblique Imagery	<p>Nominal 2.6in GSD oblique imagery ranging from 1.7in to 3.5in GSD:</p> <ul style="list-style-type: none"> Where available fully automated photogrammetric mosaiced imagery. Imagery may contain seamlines
Metadata and Reporting	<p>Metadata:</p> <ul style="list-style-type: none"> Metadata generated that meets FGDC Standards upon request Shapefile(s) with discrete deliverable boundaries and directional metadata
Orthomosaic Deliverable Format (Online)	<p>Resolution:</p> <ul style="list-style-type: none"> Nominal 2in GSD, no worse than 3in (Best Available Provided) <p>Access Methods:</p> <ul style="list-style-type: none"> Available via web-based viewer (Connect) - Contracted separately Also available via WMS/WMTS (Image Service) - Contracted separately
Orthomosaic Deliverable Format (Physical)	<p>Resolution:</p> <ul style="list-style-type: none"> Nominal 2in GSD, no worse than 3in (Best Available Provided) <p>Projection/Coordinate System:</p> <ul style="list-style-type: none"> Customer Selectable <p>Datum:</p> <ul style="list-style-type: none"> Customer Selectable <p>File Format:</p> <ul style="list-style-type: none"> Mosaic Tiles <ul style="list-style-type: none"> Available as JPEG, GeoTIFF, JPEG2000, PNG, ECW, MrSID (All versions) with world file Includes separate Pictometry Map Image (PMI) trailer file Project-Wide Mosaic <ul style="list-style-type: none"> Available in ECW, MrSID (All versions) format
Oblique Imagery & Frame Imagery Deliverable Format	<p>Access methods:</p> <ul style="list-style-type: none"> Available via web-based viewer (Connect) - Contracted separately
Delivery Timeline	<ul style="list-style-type: none"> Best efforts to make frame imagery available online within 20 days of capture complete Best efforts to make ortho and oblique imagery available online and/or ready for physical delivery within 30 days of capture completion

MAP(S)





Lee County Emergency Management Agency

110 Starksville Ave N. Leesburg, Georgia 31763

Phone – 229-759-6012 / Fax – 229-759-2283

TO: Honorable Board of County Commissioners

FROM: EMA Director Cole Williams

SUBJECT: GEMA Hazard Mitigation Grant

MEETING DATE: Tuesday, August 23, 2022

Currently, Georgia Emergency Management and Homeland Security Agency (GEMA/HS) has funding sources available to help with mitigation projects. The Federal Emergency Management Agency (FEMA) is providing a maximum of 90% cost share for all federal emergencies or major disasters that were declared between January 1, 2020 and December 31, 2021. **Therefore, the cost share for projects will be 90% federal and 10% local match.**

Staff recommends submitting an application for the Hazard Mitigation Grant to aid in the removal of debris from the Muckalee Creek, which would assist with the drainage of the creek by allowing it to flow with ease. Right now, there are several trees crossing the creek that are slowing the flow of the water. These trees are acting as a dam by not allowing the water to flow as it should. In the event of flooding, removal of these trees and other debris would assist the water movement, allowing it to move on more quickly from citizen's homes and property that causes extensive damage. This project this would also allow easier access for rescue by boat in the event a citizen became trapped in these areas of the creek.

Chief Marshal Jim Wright, Stormwater Engineer Mike Talley, Sheriff Reggie Rachals, and Deputy EMA Director Nikkie Celinski are in support. Staff will work on obtaining quotes and completing the application process for this project.



August 22, 2022

Mr. Cole Williams
EMA Director
Assistant Fire Chief
Lee County Fire and Emergency Services
934 US Highway 19 South
Leesburg, GA 31763

RE: Possible Hazard Mitigation Project

Dear Mr. Williams:

I recently responded to a drainage complaint in the Pirates Cove area adjacent to the Muckalee Creek and noticed the amount of debris encroaching into the creek. This section of the Muckalee was heavily impacted by Hurricane Michael in 2018. There are numerous fallen trees across portions of the creek and encroaching the creek from the banks.

The fallen trees across the creek and the fallen trees encroaching the creek from the banks negatively impact the hydraulic function of the creek. The additional blockages and encroachments will slow flood waters down, thereby increasing the flooding elevation through this reach.

This section of the Muckalee Creek routinely floods and impacts houses along Northampton Road. Lee County EMS personnel often must assist the residents in this area with evacuations.

Any project that would remove the fallen tree across the Muckalee Creek and those fallen trees that encroach into the creek from the banks, will improve the hydraulic function of the creek, which will lessen the potential flooding impact during lower-level storm events.

If there are any questions, please do not hesitate to call.

Sincerely,

A handwritten signature in blue ink that reads 'Michael L. Talley'.

Michael L. Talley, P.E., CFM



MEMORANDUM LEE COUNTY BOARD OF COMMISSIONERS

TO: Honorable Board of County Commissioners

SUBJECT: Curbside Solid Waste Services RFP

MEETING DATE: Tuesday, August 23, 2022

MOTION/RECOMMENDATION

Motion to award the bid for Curbside Solid Waste Services. Express Disposal is the lowest responsive bidder, for an overall savings of approximately \$156,601.80.

BACKGROUND

A Waste Service Agreement was signed **January 25, 1996** between the Lee County Board of Commissioners and the Solid Waste Management Authority of Crisp County. Currently, there are approximately 10,050 garbage accounts set up in Lee County. In a public meeting, the Lee County Board of Commissioners discussed and agreed to send a letter to the Solid Waste Management Authority of Crisp County informing them of Lee County's desire to not renew the Waste Service Agreement.

This letter was sent both certified and through US Mail on October 1, 2021, within the timeframe required by the Waste Service Agreement. Confirmation was received that this letter was "Delivered, Left with individual" on October 8, 2021. There has yet to be a response to this letter. As a result, the Waste Service Agreement will terminate in accord with the terms of that Agreement at the date and time provided in the Waste Service Agreement.

An RFP was published seeking sealed written bids from qualified contractors for **the curbside solid waste collection services of commercial and residential properties in Lee County, Georgia with services to begin September 1, 2023**. All bids were opened during a public bid opening at 2:05pm on Tuesday, August 23, 2022 in the Opal Cannon Auditorium of the T. Page Tharp Governmental Building.

Sealed written bids were received from four (4) vendors:

Express Disposal
GFL
Martin
Waste Management

ATTACHMENTS

Bid Tabulation

Express Disposal

Type	Current Rate	Proposed Rate	Difference	# of Cans/Dumpsters	Monthly Revenue Loss (Gain)	Months	Total Revenue Loss (Gain)
90 Gallon	20.78	18.99	(1.79)	10097	(18,073.63)	12	(216,883.56)
Additional Cart	12.01	11.50	(0.51)	958	(488.58)	12	(5,862.96)
4 yard dumpster	88.61	121.24	32.63	123	4,013.49	12	48,161.88
	177.22	242.48	65.26	20	1,305.20	12	15,662.40
6 yard dumpster	132.92	142.89	9.97	34	338.98	12	4,067.76
	265.83	285.78	19.95	9	179.55	12	2,154.60
	398.74	428.67	29.93	1	29.93	12	359.16
	797.48	857.34	59.86	1	59.86	12	718.32
8 yard dumpster	177.22	181.86	4.64	30	139.20	12	1,670.40
	354.44	363.72	9.28	22	204.16	12	2,449.92
	531.66	545.58	13.92	8	111.36	12	1,336.32
	1,063.32	1,091.16	27.84	1	27.84	12	334.08
	1,417.76	1,454.88	37.12	1	37.12	12	445.44
	1,594.98	1,636.74	41.76	1	41.76	12	501.12
							(144,885.12)

GFL							
Type	Current Rate	Proposed Rate	Difference	# of Cans/Dumpsters	Monthly Revenue Loss (Gain)	Months	Total Revenue Loss (Gain)
90 Gallon	20.78	19.78	(1.00)	10097	(10,097.00)	12	(121,164.00)
Additional Cart	12.01	11.43	(0.58)	958	(555.64)	12	(6,667.68)
4 yard dumpster	88.61	125.46	36.85	123	4,532.55	12	54,390.60
	177.22	233.74	56.52	20	1,130.40	12	13,564.80
6 yard dumpster	132.92	145.86	12.94	34	439.96	12	5,279.52
	265.83	271.96	6.13	9	55.17	12	662.04
	398.74	398.06	(0.68)	1	(0.68)	12	(8.16)
	797.48	776.36	(21.12)	1	(21.12)	12	(253.44)
8 yard dumpster	177.22	165.58	(11.64)	30	(349.20)	12	(4,190.40)
	354.44	309.47	(44.97)	22	(989.34)	12	(11,872.08)
	531.66	1,453.36	921.70	8	7,373.60	12	88,483.20
	1,063.32	885.03	(178.29)	1	(178.29)	12	(2,139.48)
	1,417.76	1,172.81	(244.95)	1	(244.95)	12	(2,939.40)
	1,594.98	1,316.70	(278.28)	1	(278.28)	12	(3,339.36)
							9,806.16

Martin Environmental

Type	Current Rate	Proposed Rate	Difference	# of Cans/Dumpsters	Monthly Revenue Loss (Gain)	Months	Total Revenue Loss (Gain)
90 Gallon	20.78	21.97	1.19	10097	12,015.43	12	144,185.16
Additional Cart	12.01	18.00	5.99	958	5,738.42	12	68,861.04
4 yard dumpster	88.61	86.60	(2.01)	123	(247.23)	12	(2,966.76)
	177.22	166.60	(10.62)	20	(212.40)	12	(2,548.80)
6 yard dumpster	132.92	129.90	(3.02)	34	(102.68)	12	(1,232.16)
	265.83	249.90	(15.93)	9	(143.37)	12	(1,720.44)
	398.74	362.40	(36.34)	1	(36.34)	12	(436.08)
	797.48	699.90	(97.58)	1	(97.58)	12	(1,170.96)
8 yard dumpster	177.22	173.20	(4.02)	30	(120.60)	12	(1,447.20)
	354.44	338.20	(16.24)	22	(357.28)	12	(4,287.36)
	531.66	488.20	(43.46)	8	(347.68)	12	(4,172.16)
	1,063.32	938.20	(125.12)	1	(125.12)	12	(1,501.44)
	1,417.76	1238.20	(179.56)	1	(179.56)	12	(2,154.72)
	1,594.98	1388.20	(206.78)	1	(206.78)	12	(2,481.36)
							186,926.76

Waste Management

Type	Current Rate	Proposed Rate	Difference	# of Cans/Dumpsters	Monthly Revenue Loss (Gain)	Months	Total Revenue Loss (Gain)
90 Gallon	20.78	21.26	0.48	10097	4,846.56	12	58,158.72
Additional Cart	12.01	14.5	2.49	958	2,385.42	12	28,625.04
4 yard dumpster	88.61	100.81	12.20	123	1,500.60	12	18,007.20
	177.22	201.62	24.40	20	488.00	12	5,856.00
6 yard dumpster	132.92	151.21	18.29	34	621.86	12	7,462.32
	265.83	302.42	36.59	9	329.31	12	3,951.72
	398.74	453.63	54.89	1	54.89	12	658.68
	797.48	907.26	109.78	1	109.78	12	1,317.36
8 yard dumpster	177.22	201.62	24.40	30	732.00	12	8,784.00
	354.44	403.24	48.80	22	1,073.60	12	12,883.20
	531.66	604.86	73.20	8	585.60	12	7,027.20
	1,063.32	1,209.72	146.40	1	146.40	12	1,756.80
	1,417.76	1,612.96	195.20	1	195.20	12	2,342.40
	1,594.98	1,814.58	219.60	1	219.60	12	2,635.20
							159,465.84



MEMORANDUM LEE COUNTY BOARD OF COMMISSIONERS

TO: Honorable Board of County Commissioners

SUBJECT: LMIG 2023

MEETING DATE: Tuesday, August 23, 2022

MOTION/RECOMMENDATION

Discussion of the FY2023 LMIG application and potential projects.

BACKGROUND

This month, the Georgia Department of Transportation will begin accepting applications for the FY 2023 LMIG Program. The county's formula amount for 2023 is \$627,424.76, plus our 30% local match of \$188,227.43 comes to a total of \$815,652.19 to put towards various road projects. **All electronic LMIG applications must be received no later than February 1, 2023.**

The estimated cost to resurface a road is \$230,000.00 per mile and the estimated cost to pave a road is \$1.25 million per mile.

ATTACHMENTS

Letter from GDOT
TSPLOST Cash Flow as of July 31, 2022
SPLOST Cash Flow as of July 31 2022
List of Completed Projects
List of Potential Projects



Russell R. McMurry, P.E., Commissioner
One Georgia Center
600 West Peachtree Street, NW
Atlanta, GA 30308
(404) 631-1000 Main Office

June 29, 2022

Billy Mathis, Chairman
Lee County
102 Starksville Ave N, Room 205
Leesburg, Georgia 31763

RE: Fiscal Year 2023 Local Maintenance & Improvement Grant (LMIG) Program

Dear Chairman Mathis:

We are pleased to announce that the Department will begin accepting applications for the Fiscal Year 2023 LMIG Program in July 2022. Grants will be processed electronically through our **GRANTS (LMIG) Application System**. To begin your FY 2023 LMIG Application, please visit the Department's website at www.dot.ga.gov/PS/Local/LMIG. This site provides a link to the LMIG Application, the LMIG Application Tutorial (Manual), and to the General Guidelines and Rules and other pertinent reports. The project list will be entered directly into the LMIG Application System. Please contact your District State Aid Coordinator, **Shannon Bradford**, at **229-391-5438** for assistance with the online application process.

For an application to be processed, the following requirements must be met:

- A local government must be in Department of Audits and Accounts (DOAA) and Department of Community Affairs (DCA) audit compliance.
- A signed cover letter must be attached and include a completion status of the last three fiscal years' LMIG Grants.
- A signature page must include both the local government seal and the notary seal. The application website provides a blank signature page for you to download, complete and upload as an attachment.
- A local government must provide their District State Aid Coordinator with a Statement of Financial Expenditures form and invoices for Fiscal Year 2020 projects and all other prior years unless previously approved to combine funding for Fiscal Years 2020, 2021, and 2022. The forms can be attached in the LMIG Application System if they have not already been provided to your District State Aid Coordinator.

All electronic LMIG applications must be received no later than February 1, 2023. Failure to submit applications by the deadline might result in a forfeiture of funds.

Your formula amount for the Fiscal Year 2023 Program is **\$627,424.76** and your local match is **30%**. Each local government is required to match this formula amount in accordance with Code Section 48-8-244(d).

If you have any questions regarding the LMIG Program, please contact the Local Grants Office in Atlanta at (404) 347-0240 or email questions to LocalGrantsProgram@dot.ga.gov.

Sincerely,

Bill Wright
Local Grants Administrator

cc: The Honorable Carden Summers, Georgia State Senate
The Honorable Bill Yearta, Georgia House of Representatives
The Honorable Johnny Floyd, State Transportation Board
Scott Chambers, District Engineer
Shannon Bradford, District State Aid Coordinator

TSPLOST Cash Flow
as of July 31, 2022

Bank Balance as of July 31, 2022	4,084,699.66
Total Cash	<u>4,084,699.66</u>
Current Encumbrances:	
Signs	10,000.00
Culverts	20,000.00
Rubber Tire Backhoe	117,000.00
2 Ford F150 Pick up Trucks	80,000.00
Road At Grand Island	871,597.20
Forrester/Westover Connection	1,242,392.34
Sidewalk Participation on Firetower Road (Design)	8,736.00
Haley Resurfacing	290,000.00
Total of Encumbrances	<u>2,639,725.54</u>
Total Cash Available to spend on projects through July 31, 2022	<u>1,444,974.12</u>
Anticipated Revenue (through June 30, 2023)	
Avg \$ 349,310 per month for 12 months (after tranfer to Smithville and Leesburg) (based on prior 12 months deposits)	4,191,720.00
****Also received \$ 627,424.76 for LMIG 2023	

SPLOST Cash Flow
as of July 31, 2022

Bank Balance as of July 31, 2022	6,270,017.08
Total Cash	<u>6,270,017.08</u>
Current Encumbrances:	
5 Vehicles for Sheriff's Office - one vehicle was paid for out of PY trailer sales.	178,000.00
2022 F150 Crew Cab 4*4 for public Safety	48,500.00
Jail Van	50,234.00
2022 Ford Super Duty for Sheriff's Office (rest to paid of out gov deal money)	30,911.43
5 Power Loading Cots for Ambulances	159,210.00
Eagleview Pictometry	28,557.00
Pole Mounted ALPR	16,000.00
Vehicle Mounted ALPR	19,406.00
6 Exterior Security Cameras for Jail	6,414.46
7 Taser Units	34,950.00
Lease Payments on equipment	522,604.00
Building for Parks and Rec to replace one behind Magistrate	140,250.00
Landfill Wall	170,000.00
Narc Building Floor	6,500.00
City of Leesburg Downtown Redevelopment	192,589.52
Equipment for the UA	202,312.36
Liberty Holding Pond (\$12,000 Mike Talley, \$11,850.00 Lanier, \$75,000 construction) - estimated	33,130.00
Painting and LED Lighting	258,859.00
Floors in USDA, DFACS and Tharp Buildings	100,000.00
CDBG Grant	100,000.00
Replacement of Windows at Lee County Gym	49,885.00
Grand Island Roadway Grading Project	79,943.00
Total of Encumbrances	<u>2,428,255.77</u>
Total Cash Available to spend on projects as of July 31, 2022	<u>3,841,761.31</u>
Anticipated Revenue (through June 30, 2023)	
Avg \$ 349,310 per month for 1 months (after tranfer to Smithville and Leesburg)	4,191,725.76

Completed Roads as of July 2022 - TSPLOST

Street Name	Length	Width	# of driveways	Photos taken	Notes	Recording Information	District	Status	Pre-Bid Date	Bid Date	Awarded to	Total Cost	Funding Source
Taylor Street	1,025 ft.	18 ft.	11	Yes	Regrading ditches and Taylor St.		4-VACANT						
Davis Street	1,025 ft.	18 ft.	11	Yes	Regrading ditches		4-VACANT	Completed September 2019	7/30/2019	7/28/2019	Oxford Construction Company	\$105,000.00	TSPLOST
Luna St Road	1,155 ft.	22 ft.	4	Yes	Regrading ditches		4-VACANT						
Glendale Subdivision Glendale Road, Crow Drive, Creek Drive, Cheyenne St. w/ Cherokee Avenue, Apache Street, Sandrine Avenue and Sherman Avenue	14,296 ft.			Yes	Regrading		4-VACANT	Completed July 2021	1/7/2021	1/21/2021	Oxford Construction Company	\$476,635.00	TSPLOST
Pheasant Drive Extension	832 ft.	24 ft.	0		Regrading to connect Hunter's Ridge North Subdivision to Hasty Drive		4-VACANT	Completed	1/22/2021	1/8/2021	Zane Grace Construction	\$74,050.00	TSPLOST
Hasty Drive	1,400 miles	24 ft.	12		Regrading		4-VACANT	Awaiting Bid					TSPLOST
Pine Ridge Drive	0.5268 miles	24 ft.	27		Regraded		4-VACANT	Completed July 2022	6/24/2022	4/7/2022	Oxford Construction Company	\$127,898.48	LMG
South Hill Drive	0.5723	24 ft.	27		Regraded		4-VACANT	Completed July 2022	6/24/2022	4/7/2022	Oxford Construction Company	\$127,830.48	LMG
Midway Street	0.6				Regraded		4-VACANT	Completed July 2022	6/24/2022	4/7/2022	Oxford Construction Company	\$148,000.00	LMG
TOTAL												\$1,000,630.50	
	1.7 miles		26		Finishing Wall Road from Stock's Dairy Road to the Dougherty County line (approximately 1.3 miles) with approximately 1.5 inches of pavement, curb cement, 50' concrete curbing with P.M. and 16 in. 18" driveway aprons at approximately 1146 feet.			Completed	11/17/2020	11/9/2020	Jim-Road Construction	\$468,800.00	LMG & TSPLOST
Finishing Wall Road, South				Yes			5-Ways						
Busher Lane	1,280 ft.	22 ft.	14	Yes	Paved		5-Ways	Completed August 2020	10/14/2019	11/27/2019	Oxford Construction Company	\$696,760.00	LMG & TSPLOST
Mackey Lane	1,180 ft.	22 ft.	11	Yes	Paved, regrade ditches		5-Ways						
Ackerly Circle	1,832 ft.	24 ft.	12	Yes	Paved, regrade ditches		5-Ways						
Lawyer Road	4,874.65 ft.	28 ft.	17	Yes	Regraded		5-Ways	Completed 2020	N/A	N/A	Reeves Construction	\$17,851.81	TSPLOST
Woodland Lane	818 ft.	28 ft.	13	Yes	Regraded		5-Ways	Completed 2020	N/A	N/A	Reeves Construction	\$11,911.85	LMG & TSPLOST
Stock's Dairy Road	2,000 miles	30 ft.	05		Regraded		5-Ways	Completed July 2022	1/24/2022	4/7/2022	Oxford Construction Company	\$476,802.48	LMG
Wheatley Court	0.2400 miles	27 ft.	4		Regraded		5-Ways	Completed July 2022	2/24/2022	4/7/2022	Oxford Construction Company	\$12,890.48	LMG
Waynes Court	0.1300 miles	24 ft.	14		Regraded		5-Ways	Completed July 2022	2/24/2022	4/7/2022	Oxford Construction Company	\$25,600.48	LMG
Winters Court	0.0550 miles	27 ft.	8		Regraded		5-Ways	Completed July 2022	1/24/2022	4/7/2022	Oxford Construction Company	\$16,720.48	LMG
Wheatlands Circle	0.49 miles	27 ft.	20		Regraded		5-Ways	Completed July 2022	1/24/2022	4/7/2022	Oxford Construction Company	\$130,400.18	LMG
TOTAL												\$1,940,480.26	
	4.6 Miles			Yes	New York Road, with widening 1.5 feet new paving and 0.5 feet for repair of existing edge on each side from Gray Moss Road to Phoenix Road (approximately 4.6 miles)		1-Wheaton	Oxford to fix a catch and store with P.M. and April 2021	9/18/2020	10/9/2020	Oxford Construction Company	\$884,500.00	LMG & TSPLOST
New York Road Phase II													
	approximately 4.5 miles			Yes	New York Road (CR 1027) with widening 1.5 feet new paving and 0.5 feet for repair of existing edge on each side from Larkspur Road to Gray Moss Road (approximately 4.5 miles)		1-Wheaton	Completed January 2021	10/1/2020	10/22/2020	Oxford Construction Company	\$916,400.00	LMG & TSPLOST
New York Road													
Good Street	0.10 miles	20 ft.	8		Regraded		1-Wheaton	Completed July 2022	1/24/2022	4/7/2022	Oxford Construction Company	\$45,074.48	LMG
Good March Road	1,448 miles	20 ft.	7		Regraded		1-Wheaton	Completed July 2022	1/24/2022	4/7/2022	Oxford Construction Company	\$194,014.48	LMG
Fox Tower Road					Regraded		1-Wheaton	Completed July 2022	1/24/2022	4/7/2022	Oxford Construction Company	\$55,102.98	LMG
TOTAL												\$2,400,091.18	
					Regraded with over 2.0 inches of topping with 18" from asphalt		3-Maths	Completed September 2019	9/11/2019	3/26/2020	Oxford Construction Company	\$393,311.00	TSPLOST
Carriage Subdivision				Yes	Regraded		3-Maths	Completed January 2020	10/1/2019	10/22/2019	Reeves Construction Company	\$289,110.00	LMG & TSPLOST
Carriage Lane, Cumelia Drive, Cobble Court and Applechee Drive	2,281 ft.	27 ft.		Yes	Regraded		3-Maths	Completed January 2020	10/1/2019	10/22/2019	Reeves Construction Company	\$289,110.00	LMG & TSPLOST
Carriage Lane (E. Dougherty to St. Cook/Bryant section)	4,025 ft.	27 ft.		Yes	Regraded		3-Maths	Completed January 2020	10/1/2019	10/22/2019	Reeves Construction Company	\$289,110.00	LMG & TSPLOST
W. Dougherty Dr., Carriage Lane to Fall Oaks Court													
Palmyra Subdivision				Yes	Regraded		3-Maths	Completed April 2021	1/17/2021	1/21/2021	Reeves Construction Company	\$445,500.00	TSPLOST
Palmyra Subdivision Archie Drive, Branna Lane, Charlie Lane, Aspen Drive and Hamstead Lane	15,840 ft.			Yes	Regraded		3-Maths	Completed July 2022	1/24/2022	4/7/2022	Oxford Construction Company	\$122,235.48	LMG
Palmyra Road	1,100 miles	22 ft.	14		Regraded		3-Maths	Completed July 2022	1/24/2022	4/7/2022	Oxford Construction Company	\$153,200.48	LMG
Stony Lane	0.6720 miles	24 ft.	17		Regraded		3-Maths	Completed July 2022	1/24/2022	4/7/2022	Oxford Construction Company	\$153,200.48	LMG
TOTAL												\$1,489,292.82	
	2,695 ft.			Yes - photos only	Regraded/Resurfaced		2-Signatory	Completed January 2020	10/1/2019	10/6/2019	Jim-Road Construction	\$181,086.00	TSPLOST
Jack Spruce Road													
Jacks Beach Road	2,530 ft.	20 ft.	23	Yes	Regraded/regrade ditches		2-Signatory	Completed February 2020	10/15/2019	10/22/2019	Reeves Construction Company	\$84,830.00	TSPLOST
Linden Road - from State Route 22 W to State Route 2 (Bypass)	1,457 ft.	23 ft.	5	Yes	Regraded		2-Signatory	Completed 2020	N/A	N/A	Jim-Road Construction & Repair	\$77,154.00	TSPLOST
Urick Jimmy's Lane	952ft.	27ft.	8	Yes	Regrading/regrade ditches		2-Signatory	Completed 2020	N/A	N/A	Zane Grace Construction	\$1,347.00	TSPLOST
Aspen Road	17,426 ft.			Yes	Regraded		2-Signatory	Completed April 2021	1/17/2021	1/21/2021	Oxford Construction Company	\$702,480.00	TSPLOST
Alphonsus Road	16,348 ft.			Yes	Regraded		2-Signatory	Completed April 2021	1/17/2021	1/21/2021	Oxford Construction Company	\$702,480.00	TSPLOST
Bromwood Road				Yes	Regrading		2-Signatory	Completed November 2021	1/19/2021	4/18/2021	Oxford Construction Company	\$305,000.00	TSPLOST
Phonwood Road				Yes	Regrading		2-Signatory	Completed October 2021	1/19/2021	1/15/2021	Zane Grace Construction	\$15,444.00	TSPLOST
Century Road East	2.10 miles	20 ft.	33		Regraded		2-Signatory	Completed July 2022	1/24/2022	4/7/2022	Oxford Construction Company	\$262,180.48	LMG
Cookville Road	1,2857 miles	20 ft.	20		Regraded		2-Signatory	Completed July 2022	1/24/2022	4/7/2022	Oxford Construction Company	\$152,340.48	LMG
TOTAL												\$1,840,738.17	
					Striping P.M.s. and Signs			Completed	8/26/2021	8/6/2021	Peak Pavement Marking, LLC	\$484,000.00	TSPLOST
Stock's Dairy Road					Striping P.M.s. and Signs			Completed	8/26/2021	8/6/2021	Peak Pavement Marking, LLC	Included in cost above	
Larkspur Lane Road					Striping P.M.s. and Signs			Completed	8/26/2021	8/6/2021	Peak Pavement Marking, LLC	Included in cost above	
New York Road					Striping P.M.s. and Signs			Completed	8/26/2021	8/6/2021	Peak Pavement Marking, LLC	Included in cost above	
Parking Lots - Fire Stations 81 and 82 and their 10 51 and Public Works	N/A	N/A	N/A	Yes	Paved/Resurfaced		N/A	Completed 2020	1/16/2020	1/23/2020	Zane Grace Construction	\$160,260.00	TSPLOST
TOTAL												\$884,337.00	
GRAND TOTAL												\$8,977,489.28	

Street Name	Priority	Beg Loc	End Loc	Miles	Width	District	Subdivision	Notes
Wiregrass Way	1	Martindale Dr	Cul-de-Sac	1.78	24	3	Callaway Lakes	Base failure in several spots, several large depressions
Hawkstead Dr	2	Ambleside Dr	Cul-de-Sac	0.98	28	3	Holly Plantation	Few large depressions
Ambleside Dr	3	Winifred Rd	Dead End	0.99	26	3	Holly Plantation	Few large depressions
Hickory Grove Rd	3	Winifred Rd	Pebble Ridge	1.14	24		Hickory Grove Plantation	Alligator cracking on wheel paths that will soon lead to base failure
Fairethorne Dr	5	U.S. 82	Cul-de-Sac	0.54	27	3	Hickory Grove Plantation	Some rutting of wheel paths with alligator cracking and some potholes
Hearthstone Dr	5	Fairethorne Dr	Willow Lake Dr	0.33	27	3	Hickory Grove Plantation	Some rutting of wheel paths with alligator cracking and some potholes
Heathridge Ct	5	Hearthstone Dr	Cul-de-Sac	0.12	27	3	Hickory Grove Plantation	Some rutting of wheel paths with alligator cracking and some potholes
Willow Lake Dr	6	Cul-de-Sac	Cul-de-Sac	0.94	27	3	Hickory Grove Place	Some rutting of wheel paths with alligator cracking and some potholes
Tybee Ln	7	Amelia Ln	Cul-de-Sac	0.16	26	3	Palmyra -9	Couple of large potholes and damaged cul-de-sac
Doris Dr	1	Johns Dr	Cul-de-Sac	0.22	27	4	Myers Acres	3-4 large depressions with large block cracking
Huntingdon Dr	2	Old Leesburg	Cul-de-Sac	0.56	27	4	Huntingdon	Numerous repaired potholes from rutted wheel paths and 2 large depressions
Johns Dr	3	Lovers Lane	Cul-de-Sac	0.27	24	4	Myers Acres	Block cracking with few potholes but road is still smooth
Lavender Ln	3	Johns Dr	Cul-de-Sac	0.11	24	4	Myers Acres	Block cracking with few potholes but road is still smooth
Morning Mist Dr	4	Huntingdon Dr	Hedgerow Dr	0.25	27	4	Huntingdon	Few potholes with some cracking
Ravenwood Ct	1	Maplewood Ct	Cul-de-Sac	0.35	24	5	Pine Maple	Several large depressions and edge raveling, very uneven ride near cul-de-sac
				8.72				

Roads

						Details		
Mossy Dell Rd	1	S.R. 32	New York Rd	2.91	20	1		Severe Edge Unraveling, really bad section in low area, alligator cracking
Lumpkin Rd W	2	U.S. 19	Griffith Road	1.02	20	1		Edges unraveling, alligator cracking ,and potholes
New York Rd	3	S.R. 195	Philema Rd	5.25	60	2	Resurface + Widening	Severe base failure in some locations, edges unraveling on 40% or road
Chokee Rd	4	S.R. 195	Pryor Rd	3.84	20	1	Could be spot fixed for less	5-6 bad spots with base failure and some unraveling of edges
Pinewood Rd	1	U.S. 19	S.R. 32	5.96	20	2	Could resurface partially	Some alligator cracking in wheel paths for the first 2 miles by Prison
Forrester Pkwy	3	U.S. 19	Philema Rd	5.35	24	2 3 5		Some cracking and settling of road makes ride rough
Fussell Rd	4	U.S. 82	Palmyra Rd	2.22	20	3 4		Small amount of base failure, potholes and some edge unraveling
Cedric St	3	U.S. 19	Old Leesburg	0.81	24	4		Alligator cracking on wheel paths that will lead to base failure
Graves Spring Rd	3	Philema Rd	S.R. 32	5.65	20	5		Alligator cracking on wheel paths that will lead to base failure
Sportsmans Club Rd	5	Philema Rd	County Line	1.34	20	5		Some edges unraveling and a few cracks

34.35